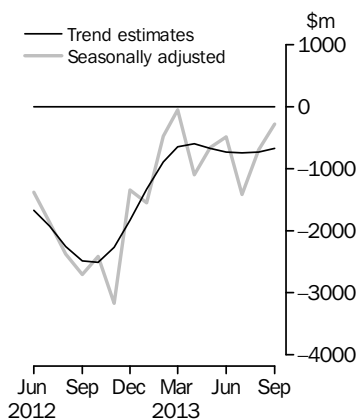


INTERNATIONAL TRADE IN GOODS AND SERVICES

AUSTRALIA

EMBARGO: 11.30AM (CANBERRA TIME) WED 6 NOV 2013

Balance on Goods and Services



KEY FIGURES

	Jul 2013	Aug 2013	Sep 2013	Aug 13 to Sep 13 %
	\$m	\$m	\$m	change
BALANCE ON GOODS AND SERVICES				
Trend estimates	-744	-727	-678	7
Seasonally adjusted	-1 413	-693	-284	59
CREDITS (Exports of goods and services)				
Trend estimates	26 581	26 845	27 095	1
Seasonally adjusted	26 272	27 185	27 309	—
DEBITS (Imports of goods and services)				
Trend estimates	27 325	27 571	27 773	1
Seasonally adjusted	27 685	27 878	27 593	-1

— nil or rounded to zero (including null cells)

KEY POINTS

BALANCE ON GOODS AND SERVICES

- In trend terms, the *balance on goods and services* was a deficit of \$678m in September 2013, a decrease of \$49m (7%) on the deficit in August 2013.
- In seasonally adjusted terms, the *balance on goods and services* was a deficit of \$284m in September 2013, a decrease of \$409m (59%) on the deficit in August 2013.

CREDITS (EXPORTS OF GOODS AND SERVICES)

- In seasonally adjusted terms, *goods and services credits* rose \$124m to \$27,309m. *Non-rural goods* rose \$206m (1%). *Rural goods* fell \$88m (3%), *net exports of goods under merchanting* fell \$1m (3%) and *non-monetary gold* fell \$1m. *Services credits* rose \$8m.

DEBITS (IMPORTS OF GOODS AND SERVICES)

- In seasonally adjusted terms, *goods and services debits* fell \$285m (1%) to \$27,593m. *Consumption goods* fell \$213m (3%), *capital goods* fell \$160m (3%) and *non-monetary gold* fell \$148m (29%). *Intermediate and other merchandise goods* rose \$215m (2%). *Services debits* rose \$21m.

INQUIRIES

For further information contact Val Tot on Canberra (02) 6252 5540 for Goods, and Ryan Oswin on Hobart (03) 6222 5898 for Services.

NOTES

FORTHCOMING ISSUES

ISSUE	RELEASE DATE
October 2013	5 December 2013
November 2013	7 January 2014
December 2013	6 February 2014
January 2014	6 March 2014
February 2014	3 April 2014
March 2014	6 May 2014



REVISIONS

Revisions have been made to incorporate the latest data relating to international trade in goods and services:

- on an international merchandise trade basis, exports and imports of goods have been revised back to March 2013
- on a balance of payments basis revisions have been applied to:
 - goods credits back to July 2012
 - goods debits back to March 2013
 - services credits back to June 2013
 - services debits back to July 2012.

Table 17 summarises revisions to goods and services on a balance of payments basis, in original current price terms, since the last issue of this publication. In original terms the revisions have:

- increased the deficit on goods and services for 2012–13 by \$303m
- increased the deficit on goods and services for the two months to August 2013 by \$148m.

VALUE ADJUSTMENTS

Adjustments have been made to the value of the 'metal ores and minerals' and 'capital goods n.e.s.' components in the balance of payments series.

See page 4 – *Value adjustments* for details.

RELATED RELEASES

TRADE IN SERVICES DATA CUBES

The data cubes *International Trade in Services by Country, by State and by Detailed Services Category, Financial Year, 2012–13* (cat no. 5368.0.55.003) will be released on 19 November 2013 and will be accessible on the ABS website <www.abs.gov.au>.

Brian Pink
Australian Statistician

CONTENTS

page

Value adjustments	4
Time series data	5

ANALYSIS

Analysis and comments	7
-----------------------	---

TABLES

INTERNATIONAL TRADE IN GOODS AND SERVICES – ON A BALANCE OF PAYMENTS BASIS

1 Goods and services, summary, seasonally adjusted and trend estimates	14
2 Goods and services, summary, original	15
3 Goods credits, original	16
4 Goods debits, original	17
5 Goods credits, seasonally adjusted	18
6 Goods debits, seasonally adjusted	19
7 Goods credits, trend estimates	20
8 Goods debits, trend estimates	21
9 Services, summary, original	22
10 Services, summary, seasonally adjusted and trend estimates	23
11 Services, original, quarterly	24

INTERNATIONAL MERCHANDISE TRADE – ON AN INTERNATIONAL MERCHANDISE TRADE BASIS

12 International merchandise exports, by commodity	25
13 International merchandise imports, by commodity	28
14 International merchandise trade, by country and country groups	31
15 International merchandise trade, by state	32

OTHER TABLES

16 Period average exchange rates per Australian dollar	33
17 Summary of revisions, goods and services, original	34

OTHER INFORMATION

Explanatory notes	35
Appendix – Related articles	42

VALUE ADJUSTMENTS

VALUE ADJUSTMENTS

International merchandise trade exports data presented in tables 12–15 of this publication are based on information provided by exporters to the *Australian Customs and Border Protection Service* (Customs and Border Protection). At the time of initial reporting to Customs and Border Protection, quantity and unit price information might be estimated for commodities such as iron ore and coal. Final quantity and/or unit price information is updated progressively in merchandise trade data as exporters revise the information provided to Customs and Border Protection. When additional information on quantity and/or unit price for these commodities is available, the ABS may adjust the balance of payments series in current price, original terms to reflect actual transaction values.

In most instances, transfer of ownership occurs when goods cross the customs frontier. In certain circumstances the ownership of large value capital expenditure items can occur prior to the items crossing the customs frontier. The ABS may adjust the relevant balance of payments series to record the timing when transfer of ownership was effected.

Goods credits

Iron ore (in original terms)

- a negative \$50m adjustment has been applied to the 'metal ores and minerals' component for September 2013. All previous adjustments have been removed.

Goods debits

Capital expenditure (in original terms)

- the 'capital goods n.e.s.' component includes an estimate of expenditure on capital goods that have changed ownership but have not yet crossed the customs frontier.

TIME SERIES DATA

TIME SERIES DATA

Tables 1 to 16 of this publication are available free on the ABS website <www.abs.gov.au> from the 'Downloads' tab of this issue with longer time series. A number of these tables present more detailed breakdowns than included in the publication. A number of additional tables are available free on the ABS website.

Tables with more detailed breakdowns:

11a Services credits: Original – Quarter¹

11b Services debits: Original – Quarter¹

12b Merchandise exports by Standard International Trade Classification (3 digit), FOB Value

13b Merchandise imports by Standard International Trade Classification (3 digit), Customs Value

14a Merchandise exports, Country and Country Groups, FOB Value

14b Merchandise imports, Country and Country Groups, Customs Value

Additional tables:

31 Merchandise exports by Broad Economic Category (BEC)

32a Merchandise exports, Industry (ANZSIC 2006), FOB Value – from July 2005 onward

32b Merchandise exports, Industry (ANZSIC 1993), FOB Value – from January 1988 to June 2009

33 Merchandise imports by Broad Economic Category (BEC)

34 Merchandise imports by Balance of Payments Broad Economic Category (BoPBEC)

35a Merchandise imports, Industry (ANZSIC 2006), Customs Value – from July 2005 onward

35b Merchandise imports, Industry (ANZSIC 1993), Customs Value – from January 1988 to June 2009

36 Merchandise exports, State by Country and Country Groups

37 Merchandise imports, State by Country and Country Groups

91 Monthly seasonal adjustment factors and forward factors for 12 months.

¹ With a one quarter lag for the more detailed breakdowns.

TIME SERIES DATA *continued*

TRADE IN SERVICES DATA CUBES

Trade in services data cubes are usually updated on an annual basis. Calendar year (cat. no. 5368.0.55.004) statistics are updated following the March issue of this publication and financial year (cat. no. 5368.0.55.003) statistics are updated following the September issue of this publication.

The following tables were included in the calendar and financial year data cubes:

- 1 International trade in services, credits, state by year
- 2 International trade in services, credits, year by state
- 3 International trade in services, debits, state by year
- 4 International trade in services, debits, year by state
- 5 International trade in services, credits, year by country and service
- 6 International trade in services, credits, service by year and by country
- 7 International trade in services, debits, year by country and service
- 8 International trade in services, debits, service by year and by country
- 9 International trade in services, credits, year by country and travel service
- 10 International trade in services, debits, year by country and travel service
- 11 International trade in services, credits, education related travel, by educational sector, by type of expenditure by year.

ANALYSIS AND COMMENTS

BALANCE ON GOODS AND SERVICES

In trend terms, the balance on goods and services was a deficit of \$678m in September 2013, a decrease of \$49m (7%) on the deficit in August 2013.

In seasonally adjusted terms, the balance on goods and services was a deficit of \$284m in September 2013, a decrease of \$409m (59%) on the deficit in August 2013.

The sum of seasonally adjusted balances for the three months to September 2013 was a deficit of \$2,390m, a rise of \$145m (6%) on the deficit of \$2,245m for the three months to June 2013. However, if seasonal factors used in compiling the quarterly balance of payments are applied, the preliminary September quarter 2013 deficit was \$2,504m, a fall of \$23m (1%) on the revised June quarter 2013 deficit of \$2,527m.

Revised quarterly estimates will be included in *Balance of Payments – Goods and Services, Preliminary Quarterly Estimates* (cat. no. 5302.0.55.004) and *Balance of Payments and International Investment Position, Australia* (cat. no. 5302.0).

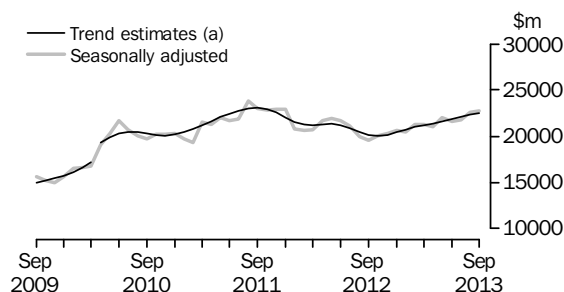
EXPORTS OF GOODS AND SERVICES

Between August and September 2013, the trend estimate of goods and services credits rose \$250m (1%) to \$27,095m.

In seasonally adjusted terms, goods and services credits rose \$124m to \$27,309m. Non-rural goods rose \$206m (1%). Rural goods fell \$88m (3%), net exports of goods under merchanting fell \$1m (3%) and non-monetary gold fell \$1m. Services credits rose \$8m.

Exports of goods

GOODS CREDITS



(a) A trend break has been applied to April 2010

RURAL GOODS

In trend terms, exports of rural goods remained steady at \$3,212m.

In seasonally adjusted terms, exports of rural goods fell \$88m (3%) to \$3,141m.

The main component contributing to the fall in seasonally adjusted estimates was other rural, down \$59m (4%).

NON-RURAL GOODS

In trend terms, exports of non-rural goods rose \$235m (1%) to \$18,123m.

In seasonally adjusted terms, exports of non-rural goods rose \$206m (1%) to \$18,317m.

ANALYSIS AND COMMENTS *continued*

Exports of goods *continued*

NON-RURAL GOODS *continued*

The main components contributing to the rise in seasonally adjusted estimates were:

- metal ores and minerals, up \$250m (3%)
- other mineral fuels, up \$197m (9%).

Partly offsetting these rises were:

- other manufactures, down \$131m (9%)
- metals (excl. non-monetary gold), down \$43m (4%)
- coal, coke and briquettes, down \$43m (1%).

For price and volume details, see the *Selected commodities* section on page 11.

NET EXPORTS OF GOODS UNDER MERCHANTING

In trend terms, net exports of goods under merchanting rose \$1m (3%) to \$31m.

In seasonally adjusted terms, net exports of goods under merchanting fell \$1m (3%) to \$30m.

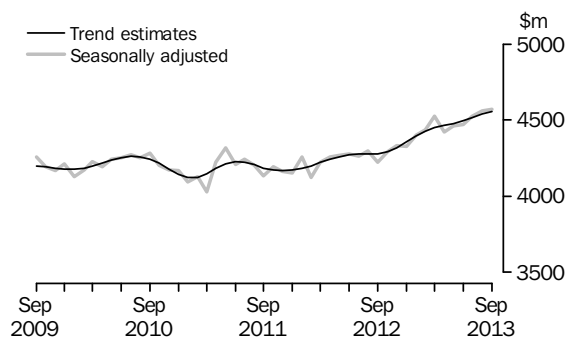
NON-MONETARY GOLD

In trend terms, exports of non-monetary gold fell \$4m to \$1,171m.

In original and seasonally adjusted terms, exports of non-monetary gold fell \$1m to \$1,249m.

Exports of services

SERVICES CREDITS



In trend terms, services credits rose \$18m to \$4,558m.

In seasonally adjusted terms, services credits rose \$8m to \$4,572m.

The main component contributing to the rise in seasonally adjusted estimates was travel, up \$33m (1%).

Partly offsetting this rise was the other services component, down \$26m (2%).

In seasonally adjusted terms, tourism related services credits rose \$32m (1%) to \$2,934m.

ANALYSIS AND COMMENTS *continued*

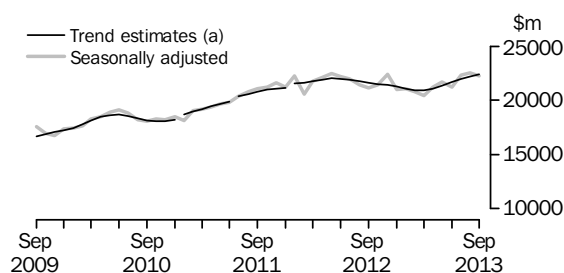
IMPORTS OF GOODS AND SERVICES

Between August and September 2013, the trend estimate of goods and services debits rose \$202m (1%) to \$27,773m.

In seasonally adjusted terms, goods and services debits fell \$285m (1%) to \$27,593m. Consumption goods fell \$213m (3%), capital goods fell \$160m (3%) and non-monetary gold fell \$148m (29%). Intermediate and other merchandise goods rose \$215m (2%). Services debits rose \$21m.

Imports of goods

GOODS DEBITS



(a) Trend breaks have been applied to January 2011, July 2011 and January 2012

CONSUMPTION GOODS

In trend terms, imports of consumption goods rose \$93m (1%) to \$6,910m.

In seasonally adjusted terms, imports of consumption goods fell \$213m (3%) to \$6,812m.

The main components contributing to the fall in seasonally adjusted estimates were:

- non-industrial transport equipment, down \$166m (9%)
- toys, books and leisure goods, down \$40m (8%).

CAPITAL GOODS

In trend terms, imports of capital goods rose \$11m to \$5,637m.

In seasonally adjusted terms, imports of capital goods fell \$160m (3%) to \$5,444m.

The main components contributing to the fall in seasonally adjusted estimates were:

- capital goods n.e.s., down \$264m (19%)
- industrial transport equipment n.e.s., down \$104m (13%).

Partly offsetting these falls was the civil aircraft and confidentialised items component, up \$108m (27%).

INTERMEDIATE AND OTHER MERCHANDISE GOODS

In trend terms, imports of intermediate and other merchandise goods rose \$104m (1%) to \$9,447m.

In seasonally adjusted terms, imports of intermediate and other merchandise goods rose \$215m (2%) to \$9,601m.

The main component contributing to the rise in seasonally adjusted estimates was fuels and lubricants, up \$357m (12%).

Partly offsetting this rise was processed industrial supplies n.e.s., down \$197m (8%).

ANALYSIS AND COMMENTS *continued*

Imports of goods continued

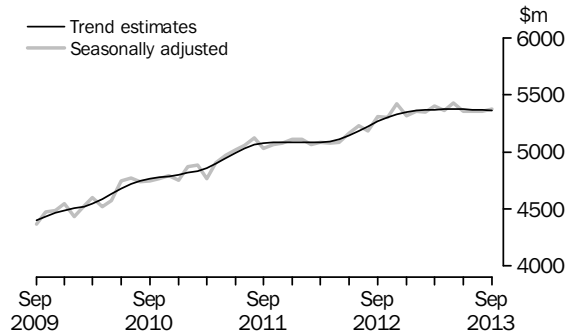
NON-MONETARY GOLD

In trend terms, imports of non-monetary gold fell \$2m to \$417m.

In original and seasonally adjusted terms, imports of non-monetary gold fell \$148m (29%) to \$360m.

Imports of services

SERVICES DEBITS



In trend terms, services debits fell \$4m to \$5,362m.

In seasonally adjusted terms, services debits rose \$21m to \$5,375m.

The main components contributing to the rise in seasonally adjusted estimates were:

- other services, up \$17m (1%)
- maintenance and repair services n.i.e., up \$12m (22%).

Partly offsetting these rises was the transport component, down \$9m (1%), with freight transport down \$10m (1%).

In seasonally adjusted terms, tourism related services debits rose \$2m to \$2,772m.

ANALYSIS AND COMMENTS *continued*

Selected commodities

SELECTED COMMODITIES, Quantity and unit value analysis: International merchandise trade basis (a)— Original terms

		CHANGE IN					
		Apr	May	Jun	Jul	Aug	Sep
		2013	2013	2013	2013	2013	2013
		%	%	%	%	%	%
.....							
IRON ORE							
Lump							
Quantity		8	-11	-1	4	—	5
Unit value		3	1	-4	5	6	—
Fines							
Quantity		-1	8	-7	2	13	-1
Unit value		-2	—	-6	5	7	2
.....							
COAL							
Hard coking							
Quantity		11	4	12	-16	4	11
Unit value		—	1	—	-4	3	-3
Semi-soft							
Quantity		-18	37	-26	4	22	—
Unit value		—	4	4	-2	-5	-5
Thermal							
Quantity		19	-6	25	1	-11	-7
Unit value		-3	5	1	2	1	-3

— nil or rounded to zero (including null cells)

(a) Data in this table are on a revised international merchandise trade basis and exclude value adjustments applied to balance of payments series.

On an international merchandise trade basis, in original terms (noting the footnote in the above table), between August and September 2013 the largest movements recorded for the following selected commodities were:

Iron ore lump rose \$82m (5%), with quantities up 5%.

Exports to:

- the Republic of Korea rose \$78m (148%), with quantities up 151% and unit values down 1%.

Iron ore fines rose \$42m (1%), with quantities down 1% and unit values up 2%.

Exports to:

- China rose \$197m (5%), with quantities up 2% and unit values up 3%
- the Republic of Korea rose \$44m (10%), with quantities up 11% and unit values down 1%.

Partly offsetting these rises was exports to Japan, down \$178m (29%), with quantities down 28% and unit values down 2%.

ANALYSIS AND COMMENTS *continued*

Selected commodities continued

Hard coking coal rose \$97m (8%), with quantities up 11% and unit values down 3%.

Exports to:

- India rose \$94m (36%), with quantities up 38% and unit values down 2%
- the Netherlands rose \$42m (60%), with quantities up 76% and unit values down 9%
- Sweden rose \$36m (294%), with quantities up 300% and unit values down 2%
- Taiwan rose \$27m (53%), with quantities up 58% and unit values down 3%.

Partly offsetting these rises was exports to China, down \$118m (29%), with quantities down 26% and unit values down 4%.

Semi-soft coal fell \$36m (5%), with unit values down 5%.

Exports to:

- Japan fell \$77m (28%), with quantities down 26% and unit values down 3%
- India fell \$29m (29%), with quantities down 23% and unit values down 7%.

Partly offsetting these falls was exports to China, up \$56m (32%), with quantities up 32%.

Thermal coal fell \$139m (10%), with quantities down 7% and unit values down 3%.

Exports to:

- China fell \$87m (28%), with quantities down 24% and unit values down 5%
- the Republic of Korea fell \$59m (30%), with quantities down 26% and unit values down 5%.

GOODS AND SERVICES(a), Summary—Seasonally Adjusted and Trend Estimates

	Oct 2012	Nov 2012	Dec 2012	Jan 2013	Feb 2013	Mar 2013	Apr 2013	May 2013	Jun 2013	Jul 2013	Aug 2013	Sep 2013
	\$m	\$m	\$m	\$m	\$m	\$m	\$m	\$m	\$m	\$m	\$m	\$m
SEASONALLY ADJUSTED												
BALANCE												
On goods and services	-2 419	-3 166	-1 349	-1 549	-478	-54	-1 100	-655	-490	-1 413	-693	-284
CREDITS												
Total goods and services	24 330	24 655	24 960	24 875	25 687	25 807	25 474	26 443	26 051	26 272	27 185	27 309
Total goods	20 035	20 321	20 631	20 473	21 252	21 282	21 053	21 980	21 580	21 743	22 621	22 736
Rural goods(b)	2 995	3 043	2 973	2 869	3 067	3 078	3 131	3 182	3 178	3 260	3 229	3 141
Non-rural goods(b)	15 387	15 771	16 425	16 149	16 873	17 011	16 588	17 315	17 209	17 511	18 111	18 317
Net exports of goods under merchandise(c)	18	18	16	28	28	27	28	28	29	31	31	30
Non-monetary gold(c)	1 635	1 489	1 217	1 427	1 284	1 166	1 306	1 456	1 164	941	1 250	1 249
Total services	4 295	4 333	4 329	4 402	4 435	4 525	4 421	4 463	4 471	4 529	4 564	4 572
DEBITS												
Total goods and services	-26 749	-27 821	-26 308	-26 424	-26 165	-25 862	-26 574	-27 098	-26 541	-27 685	-27 878	-27 593
Total goods	-21 445	-22 402	-20 995	-21 070	-20 814	-20 463	-21 211	-21 671	-21 183	-22 330	-22 523	-22 218
Consumption goods	-6 189	-6 342	-6 302	-6 467	-6 472	-6 453	-6 130	-6 493	-6 587	-6 734	-7 025	-6 812
Capital goods	-5 659	-6 242	-5 297	-5 449	-5 157	-4 553	-5 780	-5 490	-5 598	-5 668	-5 604	-5 444
Intermediate and other merchandise goods	-9 051	-9 451	-9 019	-8 805	-8 846	-9 090	-8 855	-9 269	-8 639	-9 526	-9 386	-9 601
Non-monetary gold(c)	-545	-366	-377	-348	-339	-367	-446	-419	-360	-401	-508	-360
Total services	-5 304	-5 419	-5 313	-5 354	-5 351	-5 399	-5 363	-5 426	-5 357	-5 355	-5 354	-5 375

TREND ESTIMATES (d)

BALANCE												
On goods and services	-2 512	-2 264	-1 830	-1 324	-896	-648	-595	-666	-731	-744	-727	-678
CREDITS												
Total goods and services	24 311	24 464	24 772	25 124	25 419	25 641	25 841	26 064	26 313	26 581	26 845	27 095
Total goods	20 018	20 144	20 415	20 728	20 991	21 191	21 376	21 584	21 816	22 064	22 305	22 537
Rural goods(b)	2 958	2 963	2 976	2 997	3 028	3 072	3 122	3 167	3 194	3 208	3 212	3 212
Non-rural goods(b)	15 580	15 729	16 025	16 356	16 627	16 810	16 964	17 150	17 382	17 639	17 888	18 123
Net exports of goods under merchandise	19	20	21	23	26	27	28	29	29	30	30	31
Non-monetary gold	1 462	1 432	1 392	1 351	1 311	1 282	1 262	1 239	1 210	1 187	1 175	1 171
Total services	4 293	4 320	4 358	4 396	4 428	4 450	4 465	4 479	4 496	4 517	4 540	4 558
DEBITS												
Total goods and services	-26 823	-26 728	-26 602	-26 449	-26 315	-26 288	-26 436	-26 729	-27 043	-27 325	-27 571	-27 773
Total goods	-21 518	-21 397	-21 253	-21 087	-20 946	-20 916	-21 062	-21 353	-21 669	-21 955	-22 205	-22 411
Consumption goods	-6 219	-6 286	-6 343	-6 377	-6 384	-6 387	-6 416	-6 489	-6 594	-6 710	-6 817	-6 910
Capital goods	-5 701	-5 601	-5 478	-5 349	-5 253	-5 239	-5 313	-5 441	-5 545	-5 600	-5 626	-5 637
Intermediate and other merchandise goods	-9 113	-9 071	-9 032	-8 989	-8 951	-8 923	-8 944	-9 019	-9 118	-9 228	-9 343	-9 447
Non-monetary gold	-485	-440	-399	-371	-360	-368	-389	-404	-413	-417	-419	-417
Total services	-5 304	-5 331	-5 349	-5 362	-5 369	-5 372	-5 375	-5 376	-5 374	-5 370	-5 366	-5 362

(a) For sign conventions, see paragraph 15 of the Explanatory Notes.

(b) For all time periods, estimates for sugar, sugar preparations and honey are included in Non-rural goods.

(c) This component is not seasonally adjusted.

(d) Caution should be used when interpreting recent trend estimates as they may be affected by unusual economic factors. For more details on trend estimates, please see paragraph 19 of the Explanatory Notes.

GOODS AND SERVICES (a), Summary—Original

	Oct 2012	Nov 2012	Dec 2012	Jan 2013	Feb 2013	Mar 2013	Apr 2013	May 2013	Jun 2013	Jul 2013	Aug 2013	Sep 2013
	\$m	\$m	\$m	\$m	\$m	\$m	\$m	\$m	\$m	\$m	\$m	\$m
BALANCE												
On goods and services	-4 173	-5 384	247	-3 609	108	1 802	-544	56	944	-2 246	-345	-603
CREDITS												
Total goods and services	24 857	24 207	26 268	22 429	23 621	26 105	25 310	27 061	26 504	26 793	28 405	27 614
Total goods	20 369	19 816	21 936	18 168	19 115	21 452	20 804	22 701	22 334	22 340	23 766	23 103
Rural goods(b)	2 920	2 831	3 079	2 428	2 987	3 333	3 163	3 534	3 363	3 352	3 225	2 907
Non-rural goods(b)	15 796	15 478	17 624	14 285	14 816	16 926	16 307	17 683	17 778	18 016	19 260	18 917
Net exports of goods under merchandising	18	18	16	28	28	27	28	28	29	31	31	30
Non-monetary gold	1 635	1 489	1 217	1 427	1 284	1 166	1 306	1 456	1 164	941	1 250	1 249
Total services	4 488	4 391	4 332	4 261	4 506	4 653	4 506	4 360	4 170	4 453	4 639	4 511
DEBITS												
Total goods and services	-29 030	-29 591	-26 021	-26 038	-23 513	-24 303	-25 854	-27 005	-25 560	-29 039	-28 750	-28 217
Total goods	-23 366	-24 274	-20 488	-20 475	-18 886	-19 252	-20 628	-21 808	-20 157	-23 339	-23 433	-22 435
Consumption goods	-7 087	-7 328	-6 188	-6 151	-5 839	-5 782	-5 826	-6 399	-5 994	-7 041	-7 435	-6 961
Capital goods	-6 135	-6 781	-5 292	-5 103	-4 464	-4 349	-5 508	-5 569	-5 559	-6 026	-5 758	-5 525
Intermediate and other merchandise goods	-9 599	-9 799	-8 631	-8 873	-8 244	-8 754	-8 848	-9 421	-8 244	-9 871	-9 732	-9 589
Non-monetary gold	-545	-366	-377	-348	-339	-367	-446	-419	-360	-401	-508	-360
Total services	-5 664	-5 317	-5 533	-5 563	-4 627	-5 051	-5 226	-5 197	-5 403	-5 700	-5 317	-5 782

(a) For sign conventions, see paragraph 15 of the Explanatory Notes.

(b) For all time periods, estimates for sugar, sugar preparations and honey are included in Non-rural goods.

							3 MONTHS ENDED		Change
							SEPTEMBER		
	2010-11	2011-12	2012-13	Jul 2013	Aug 2013	Sep 2013	2012	2013	
	\$m	\$m	\$m	\$m	\$m	\$m	\$m	\$m	%
Total goods credits	247 022	265 109	249 088	22 340	23 766	23 103	62 393	69 209	10.9
General merchandise	232 543	248 248	232 575	21 368	22 485	21 824	58 244	65 677	12.8
<i>Rural goods</i>	30 473	34 728	36 269	3 352	3 225	2 907	8 631	9 484	9.9
Meat and meat preparations	6 930	7 121	7 648	777	768	766	1 781	2 311	29.8
Cereal grains and cereal preparations	7 351	9 061	9 285	778	742	610	2 285	2 130	-6.8
Wool and sheepskins	3 048	3 123	2 869	242	179	233	518	654	26.3
Other rural (a)	13 144	15 423	16 467	1 555	1 536	1 298	4 047	4 389	8.5
<i>Non-rural goods</i>	202 070	213 520	196 306	18 016	19 260	18 917	49 613	56 193	13.3
Metal ores and minerals	79 483	85 426	79 290	7 284	8 212	8 570	18 318	24 066	31.4
Coal, coke and briquettes	44 101	48 216	38 911	3 427	3 451	3 377	10 160	10 255	0.9
Other mineral fuels	23 594	25 691	26 429	2 655	2 487	2 318	7 745	7 460	-3.7
Metals (excl. non-monetary gold)	12 687	11 699	10 488	922	1 023	846	2 442	2 791	14.3
Machinery	8 444	8 838	8 708	813	776	780	2 279	2 369	3.9
Transport equipment	3 902	4 198	4 335	398	482	459	1 218	1 339	9.9
Other manufactures	16 289	16 916	16 034	1 428	1 598	1 444	4 339	4 470	3.0
Other non-rural (incl. sugar and beverages) (a)	11 980	10 868	10 433	951	1 082	977	2 698	3 010	11.6
Goods procured in ports by carriers	1 590	1 668	1 678	138	149	146	414	433	4.6
Net exports of goods under merchanting	223	211	277	31	31	30	57	92	61.4
Goods acquired under merchanting									
(negative exports)	-1 723	-1 475	-1 480	-110	-110	-110	-429	-330	23.1
Goods sold under merchanting	1 946	1 686	1 757	141	141	140	486	422	-13.2
Non-monetary gold	14 256	16 650	16 236	941	1 250	1 249	4 092	3 440	-15.9

(a) For all time periods, estimates for sugar, sugar preparations and honey are included in Other non-rural.

GOODS DEBITS(a), Original

							3 MONTHS ENDED		Change
							SEPTEMBER		
	2010-11	2011-12	2012-13	Jul 2013	Aug 2013	Sep 2013	2012	2013	
	\$m	\$m	\$m	\$m	\$m	\$m	\$m	\$m	%
Total goods debits	-225 381	-257 516	-255 391	-23 339	-23 433	-22 435	-66 057	-69 207	-4.8
General merchandise	-220 414	-250 808	-250 222	-22 938	-22 925	-22 075	-64 455	-67 938	-5.4
<i>Consumption goods</i>	-68 533	-72 224	-75 610	-7 041	-7 435	-6 961	-19 016	-21 437	-12.7
Food and beverages, mainly for consumption	-9 017	-9 802	-10 186	-910	-1 014	-1 011	-2 557	-2 935	-14.8
Household electrical items	-5 440	-5 120	-5 112	-409	-473	-476	-1 259	-1 358	-7.9
Non-industrial transport equipment	-15 953	-17 442	-18 777	-1 756	-1 854	-1 501	-4 410	-5 111	-15.9
Textiles, clothing and footwear	-10 588	-11 175	-12 264	-1 201	-1 275	-1 159	-3 205	-3 635	-13.4
Toys, books and leisure goods	-5 202	-5 218	-5 193	-431	-537	-541	-1 372	-1 509	-10.0
Consumption goods n.e.s.	-22 333	-23 467	-24 078	-2 334	-2 282	-2 273	-6 213	-6 889	-10.9
<i>Capital goods</i>	-53 824	-69 597	-66 204	-6 026	-5 758	-5 525	-17 444	-17 309	0.8
Machinery and industrial equipment	-15 727	-20 340	-20 324	-1 981	-1 771	-1 769	-5 614	-5 521	1.7
ADP equipment	-7 798	-8 226	-7 876	-733	-670	-647	-1 871	-2 050	-9.6
Telecommunications equipment	-7 073	-7 891	-8 280	-664	-612	-856	-2 055	-2 132	-3.7
Civil aircraft and confidentialised items(b)	-5 960	-6 709	-4 483	-341	-395	-503	-1 471	-1 239	15.8
Industrial transport equipment n.e.s.	-7 395	-9 583	-9 663	-908	-872	-670	-2 740	-2 450	10.6
Capital goods n.e.s.	-9 871	-16 848	-15 578	-1 399	-1 438	-1 080	-3 693	-3 917	-6.1
<i>Intermediate and other merchandise goods</i>	-98 057	-108 987	-108 408	-9 871	-9 732	-9 589	-27 995	-29 192	-4.3
Food and beverages, mainly for industry	-1 223	-1 251	-1 136	-113	-114	-120	-296	-347	-17.2
Primary industrial supplies n.e.s.	-1 713	-1 678	-1 546	-115	-103	-126	-397	-344	13.4
Fuels and lubricants	-31 699	-38 288	-38 940	-3 478	-3 088	-3 445	-9 716	-10 011	-3.0
Parts for transport equipment	-9 304	-10 763	-10 307	-939	-1 024	-868	-2 767	-2 831	-2.3
Parts for ADP equipment	-918	-713	-599	-56	-54	-50	-160	-160	—
Other parts for capital goods	-14 339	-14 103	-13 720	-1 295	-1 253	-1 264	-3 774	-3 812	-1.0
Organic and inorganic chemicals	-4 495	-4 504	-4 118	-318	-342	-287	-1 197	-947	20.9
Paper and paperboard	-2 351	-2 177	-2 214	-196	-200	-212	-587	-608	-3.6
Textile yarn and fabrics	-1 194	-1 165	-1 084	-103	-112	-107	-287	-322	-12.2
Iron and steel	-3 788	-4 002	-3 931	-340	-300	-341	-1 135	-981	13.6
Plastics	-2 911	-3 055	-3 023	-303	-310	-306	-763	-919	-20.4
Processed industrial supplies n.e.s.	-22 008	-24 899	-25 621	-2 318	-2 659	-2 294	-6 331	-7 271	-14.8
Other merchandise goods(b)	-501	-475	-474	-149	-25	-22	-152	-196	-28.9
Goods procured in ports by carriers	-1 613	-1 914	-1 695	-148	-148	-147	-433	-443	-2.3
Non-monetary gold	-4 967	-6 708	-5 169	-401	-508	-360	-1 602	-1 269	20.8

— nil or rounded to zero (including null cells)

(a) For sign conventions, see paragraph 15 of the Explanatory Notes.

(b) From July 2008, commodities subject to a 'no commodity details' or 'no value details' restriction are included in Civil aircraft and confidentialised items. For earlier periods, commodities subject to a 'no commodity details' or 'no value details' restriction are included in Other merchandise goods.

	Dec 2012	Jan 2013	Feb 2013	Mar 2013	Apr 2013	May 2013	Jun 2013	Jul 2013	Aug 2013	Sep 2013
	\$m	\$m	\$m	\$m	\$m	\$m	\$m	\$m	\$m	\$m
Total goods credits	20 631	20 473	21 252	21 282	21 053	21 980	21 580	21 743	22 621	22 736
General merchandise	19 398	19 018	19 940	20 089	19 719	20 496	20 387	20 771	21 340	21 457
<i>Rural goods</i>	2 973	2 869	3 067	3 078	3 131	3 182	3 178	3 260	3 229	3 141
Meat and meat preparations	628	632	643	659	671	690	690	755	760	791
Cereal grains and cereal preparations	641	724	764	811	772	835	774	756	760	712
Wool and sheepskins	253	237	259	249	230	238	261	275	295	284
Other rural (a)	1 451	1 275	1 401	1 359	1 458	1 419	1 452	1 475	1 413	1 354
<i>Non-rural goods</i>	16 425	16 149	16 873	17 011	16 588	17 315	17 209	17 511	18 111	18 317
Metal ores and minerals	6 735	6 788	7 024	7 190	7 227	7 448	7 056	7 323	7 891	8 141
Coal, coke and briquettes(b)	3 172	3 022	3 427	3 324	3 164	3 322	3 397	3 441	3 288	3 245
Other mineral fuels(c)	2 217	2 251	1 973	2 122	1 894	2 204	2 145	2 239	2 172	2 369
Metals (excl. non-monetary gold)	870	777	1 023	908	943	912	941	914	962	919
Machinery	708	724	728	760	708	740	736	768	742	757
Transport equipment	347	324	357	368	343	346	400	400	438	441
Other manufactures	1 379	1 283	1 339	1 287	1 318	1 294	1 417	1 372	1 505	1 374
Other non-rural (incl. sugar and beverages)(a)	857	839	862	915	846	900	978	912	966	926
Goods procured in ports by carriers(c)	140	142	141	137	145	149	140	141	147	145
Net exports of goods under merchanting(d)	16	28	28	27	28	28	29	31	31	30
Non-monetary gold(d)	1 217	1 427	1 284	1 166	1 306	1 456	1 164	941	1 250	1 249

(a) For all time periods, estimates for sugar, sugar preparations and honey are included in Other non-rural.

(b) From July 1971 to June 2005, only a length-of-month adjustment has been applied to this component. From July 2005, this component is seasonally adjusted using seasonal factors derived from a monthly volume series.

(c) In using these seasonally adjusted series, care should be exercised because of the difficulties associated with reliably estimating the seasonal pattern.

(d) This component is not seasonally adjusted.

GOODS DEBITS(a), Seasonally Adjusted

	Dec 2012	Jan 2013	Feb 2013	Mar 2013	Apr 2013	May 2013	Jun 2013	Jul 2013	Aug 2013	Sep 2013
	\$m	\$m	\$m	\$m	\$m	\$m	\$m	\$m	\$m	\$m
Total goods debits	-20 995	-21 070	-20 814	-20 463	-21 211	-21 671	-21 183	-22 330	-22 523	-22 218
General merchandise	-20 618	-20 722	-20 475	-20 096	-20 765	-21 252	-20 823	-21 929	-22 015	-21 858
<i>Consumption goods</i>	-6 302	-6 467	-6 472	-6 453	-6 130	-6 493	-6 587	-6 734	-7 025	-6 812
Food and beverages, mainly for consumption	-806	-856	-899	-908	-857	-873	-865	-905	-972	-960
Household electrical items	-434	-418	-427	-421	-419	-455	-444	-421	-450	-442
Non-industrial transport equipment	-1 602	-1 779	-1 587	-1 603	-1 528	-1 556	-1 618	-1 724	-1 795	-1 629
Textiles, clothing and footwear	-1 014	-989	-1 070	-1 012	-1 011	-1 059	-1 113	-1 106	-1 157	-1 142
Toys, books and leisure goods	-469	-438	-423	-442	-427	-460	-419	-452	-493	-453
Consumption goods n.e.s.	-1 976	-1 987	-2 066	-2 067	-1 888	-2 090	-2 128	-2 128	-2 158	-2 186
<i>Capital goods</i>	-5 297	-5 449	-5 157	-4 553	-5 780	-5 490	-5 598	-5 668	-5 604	-5 444
Machinery and industrial equipment	-1 696	-1 633	-1 695	-1 574	-1 630	-1 623	-1 648	-1 810	-1 667	-1 712
ADP equipment	-719	-725	-727	-601	-616	-631	-655	-666	-680	-713
Telecommunications equipment	-505	-772	-654	-697	-724	-753	-702	-689	-696	-718
Civil aircraft and confidentialised items(b)(c)	-210	-292	-165	-181	-489	-333	-408	-341	-395	-503
Industrial transport equipment n.e.s.(d)	-888	-774	-808	-648	-784	-758	-729	-770	-787	-683
Capital goods n.e.s.	-1 279	-1 253	-1 109	-852	-1 538	-1 392	-1 456	-1 392	-1 380	-1 116
<i>Intermediate and other merchandise goods</i>	-9 019	-8 805	-8 846	-9 090	-8 855	-9 269	-8 639	-9 526	-9 386	-9 601
Food and beverages, mainly for industry	-94	-90	-84	-94	-97	-103	-99	-110	-111	-115
Primary industrial supplies n.e.s.(d)	-109	-107	-141	-108	-123	-176	-112	-91	-114	-134
Fuels and lubricants(c)	-3 409	-3 196	-3 034	-3 194	-3 347	-3 435	-2 929	-3 478	-3 088	-3 445
Parts for transport equipment	-873	-827	-828	-826	-845	-849	-853	-894	-944	-902
Parts for ADP equipment	-48	-49	-54	-45	-48	-50	-48	-52	-52	-51
Other parts for capital goods	-1 013	-1 126	-1 143	-1 179	-1 104	-1 102	-1 121	-1 210	-1 199	-1 252
Organic and inorganic chemicals	-357	-310	-323	-288	-278	-283	-272	-300	-320	-297
Paper and paperboard	-192	-184	-184	-197	-169	-184	-177	-185	-182	-187
Textile yarn and fabrics	-87	-89	-90	-92	-88	-92	-95	-98	-101	-100
Iron and steel	-329	-285	-283	-359	-282	-325	-294	-298	-293	-333
Plastics	-226	-254	-260	-257	-256	-270	-270	-287	-288	-293
Processed industrial supplies n.e.s.	-2 108	-2 127	-2 258	-2 248	-2 044	-2 239	-2 210	-2 226	-2 520	-2 323
Other merchandise goods(b)(d)(e)	-25	-21	-21	-62	-42	-29	-26	-149	-25	-22
Goods procured in ports by carriers(c)	-148	-141	-141	-142	-132	-132	-132	-148	-148	-147
Non-monetary gold(c)	-377	-348	-339	-367	-446	-419	-360	-401	-508	-360

(a) For sign conventions, see paragraph 15 of the Explanatory Notes.

(b) From July 2008, commodities subject to a 'no commodity details' or 'no value details' restriction are included in Civil aircraft and confidentialised items. For earlier periods, commodities subject to a 'no commodity details' or 'no value details' restriction are included in Other merchandise goods.

(c) This component is not seasonally adjusted.

(d) In using these seasonally adjusted series, care should be exercised because of the difficulties associated with reliably estimating the seasonal pattern.

(e) From July 1981, this component is not seasonally adjusted.

GOODS CREDITS(a), Trend Estimates

	Dec 2012	Jan 2013	Feb 2013	Mar 2013	Apr 2013	May 2013	Jun 2013	Jul 2013	Aug 2013	Sep 2013
	\$m	\$m	\$m	\$m	\$m	\$m	\$m	\$m	\$m	\$m
Total goods credits	20 415	20 728	20 991	21 191	21 376	21 584	21 816	22 064	22 305	22 537
General merchandise	19 001	19 353	19 655	19 882	20 086	20 316	20 577	20 847	21 100	21 335
<i>Rural goods</i>	2 976	2 997	3 028	3 072	3 122	3 167	3 194	3 208	3 212	3 212
Meat and meat preparations	630	638	645	655	671	691	713	736	758	777
Cereal grains and cereal preparations	722	728	748	774	791	794	783	768	752	736
Wool and sheepskins	243	246	246	244	245	251	260	270	280	289
Other rural(b)	1 381	1 386	1 389	1 399	1 415	1 431	1 439	1 434	1 422	1 410
<i>Non-rural goods</i>	16 025	16 356	16 627	16 810	16 964	17 150	17 382	17 639	17 888	18 123
Metal ores and minerals	6 440	6 773	7 018	7 143	7 203	7 277	7 390	7 537	7 699	7 856
Coal, coke and briquettes	3 160	3 186	3 224	3 268	3 310	3 332	3 340	3 340	3 329	3 325
Other mineral fuels	2 193	2 131	2 086	2 064	2 070	2 100	2 148	2 201	2 251	2 289
Metals (excl. non-monetary gold)	850	878	904	923	933	936	934	932	930	935
Machinery	724	728	731	733	735	738	743	747	751	754
Transport equipment	343	341	343	348	358	371	387	404	421	436
Other manufactures	1 319	1 313	1 309	1 310	1 322	1 344	1 372	1 397	1 418	1 435
Other non-rural (incl. sugar and beverages)(b)	857	866	871	878	892	909	925	936	944	949
Goods procured in ports by carriers	139	140	141	142	143	143	144	144	145	145
Net exports of goods under merchanting	21	23	26	27	28	29	29	30	30	31
Non-monetary gold	1 392	1 351	1 311	1 282	1 262	1 239	1 210	1 187	1 175	1 171

(a) Caution should be used when interpreting recent trend estimates as they may be affected by unusual economic factors. For more details on trend estimates, please see paragraph 19 of the Explanatory Notes.

(b) For all time periods, estimates for sugar, sugar preparations and honey are included in Other non-rural.

GOODS DEBITS(a)(b), Trend Estimates

	Dec 2012	Jan 2013	Feb 2013	Mar 2013	Apr 2013	May 2013	Jun 2013	Jul 2013	Aug 2013	Sep 2013
	\$m	\$m	\$m	\$m	\$m	\$m	\$m	\$m	\$m	\$m
Total goods debits	-21 253	-21 087	-20 946	-20 916	-21 062	-21 353	-21 669	-21 955	-22 205	-22 411
General merchandise	-20 854	-20 716	-20 587	-20 548	-20 673	-20 949	-21 256	-21 538	-21 786	-21 994
<i>Consumption goods</i>	-6 343	-6 377	-6 384	-6 387	-6 416	-6 489	-6 594	-6 710	-6 817	-6 910
Food and beverages, mainly for consumption	-845	-857	-868	-874	-878	-884	-895	-912	-930	-949
Household electrical items	-426	-427	-427	-428	-430	-434	-438	-440	-442	-443
Non-industrial transport equipment	-1 615	-1 629	-1 620	-1 604	-1 594	-1 605	-1 633	-1 666	-1 697	-1 717
Textiles, clothing and footwear	-1 014	-1 016	-1 020	-1 028	-1 044	-1 065	-1 089	-1 113	-1 133	-1 154
Toys, books and leisure goods	-439	-440	-438	-436	-437	-440	-447	-454	-461	-465
Consumption goods n.e.s.	-2 004	-2 008	-2 011	-2 017	-2 034	-2 060	-2 092	-2 125	-2 154	-2 182
<i>Capital goods</i>	-5 478	-5 349	-5 253	-5 239	-5 313	-5 441	-5 545	-5 600	-5 626	-5 637
Machinery and industrial equipment	-1 681	-1 657	-1 638	-1 629	-1 633	-1 650	-1 673	-1 695	-1 711	-1 729
ADP equipment	-691	-695	-681	-660	-642	-638	-647	-662	-678	-698
Telecommunications equipment	-666	-674	-687	-701	-712	-716	-713	-709	-708	-703
Civil aircraft and confidentialised items(c)	-301	-268	-261	-277	-309	-350	-381	-405	-427	-442
Industrial transport equipment n.e.s.	-833	-803	-772	-753	-744	-745	-749	-750	-746	-745
Capital goods n.e.s.	-1 306	-1 252	-1 213	-1 219	-1 272	-1 341	-1 381	-1 380	-1 356	-1 320
<i>Intermediate and other merchandise goods</i>	-9 032	-8 989	-8 951	-8 923	-8 944	-9 019	-9 118	-9 228	-9 343	-9 447
Food and beverages, mainly for industry	-93	-92	-92	-93	-96	-100	-104	-108	-111	-113
Primary industrial supplies n.e.s.	-121	-121	-124	-127	-128	-127	-124	-120	-118	-118
Fuels and lubricants	-3 273	-3 254	-3 240	-3 223	-3 222	-3 239	-3 257	-3 270	-3 285	-3 294
Parts for transport equipment	-845	-838	-833	-832	-839	-854	-872	-890	-905	-919
Parts for ADP equipment	-50	-49	-49	-49	-49	-49	-50	-51	-51	-52
Other parts for capital goods	-1 117	-1 113	-1 115	-1 120	-1 128	-1 139	-1 153	-1 174	-1 199	-1 221
Organic and inorganic chemicals	-366	-340	-313	-293	-284	-284	-288	-293	-298	-305
Paper and paperboard	-191	-190	-187	-184	-182	-181	-181	-182	-183	-184
Textile yarn and fabrics	-90	-90	-89	-90	-91	-93	-95	-97	-99	-101
Iron and steel	-318	-313	-309	-307	-306	-306	-305	-305	-306	-306
Plastics	-247	-250	-254	-258	-262	-268	-275	-281	-287	-292
Processed industrial supplies n.e.s.	-2 140	-2 161	-2 170	-2 175	-2 186	-2 210	-2 246	-2 291	-2 335	-2 377
Other merchandise goods(c)	-36	-35	-35	-36	-36	-34	-30	-26	-23	-19
Goods procured in ports by carriers	-145	-143	-140	-137	-136	-136	-138	-141	-144	-147
Non-monetary gold	-399	-371	-360	-368	-389	-404	-413	-417	-419	-417

(a) For sign conventions, see paragraph 15 of the Explanatory Notes.

(b) Caution should be used when interpreting recent trend estimates as they may be affected by unusual economic factors. For more details on trend estimates, please see paragraph 19 of the Explanatory Notes.

(c) From July 2008, commodities subject to a 'no commodity details' or 'no value details' restriction are included in Civil aircraft and confidentialised items. For earlier periods, commodities subject to a 'no commodity details' or 'no value details' restriction are included in Other merchandise goods.

							3 MONTHS ENDED SEPTEMBER		Change %
	2010–11	2011–12	2012–13	Jul 2013	Aug 2013	Sep 2013	2012	2013	
	\$m	\$m	\$m	\$m	\$m	\$m	\$m	\$m	
Services credits	50 299	50 529	52 411	4 453	4 639	4 511	12 744	13 603	6.7
Manufacturing services on physical inputs owned by others	33	21	1	1	1	2	—	4	100.0
Maintenance and repair services n.i.e.	49	47	57	12	10	9	14	31	121.4
Transport	6 412	6 331	6 032	505	506	498	1 471	1 509	2.6
Passenger(c)	2 800	2 620	2 332	156	157	145	538	458	-14.9
Freight	390	372	341	29	29	31	85	89	4.7
Other	2 253	2 278	2 305	215	215	216	570	646	13.3
Postal and courier services(d)	969	1 061	1 054	105	105	106	278	316	13.7
Travel	30 582	30 439	31 233	2 669	2 855	2 733	7 804	8 257	5.8
Other services	13 223	13 691	15 088	1 266	1 267	1 269	3 455	3 802	10.0
Services debits	-57 967	-61 194	-63 959	-5 700	-5 317	-5 782	-16 378	-16 799	-2.6
Manufacturing services on physical inputs owned by others	-1	-1	—	—	—	—	—	—	—
Maintenance and repair services n.i.e.	-342	-380	-552	-39	-54	-66	-152	-159	-4.6
Transport	-14 758	-16 118	-16 934	-1 506	-1 432	-1 507	-4 299	-4 445	-3.4
Passenger(c)	-6 103	-6 688	-7 151	-574	-529	-633	-1 796	-1 736	3.3
Freight	-8 251	-8 945	-9 144	-870	-841	-811	-2 335	-2 522	-8.0
Other	-279	-368	-555	-51	-51	-52	-144	-154	-6.9
Postal and courier services(d)	-125	-117	-84	-11	-11	-11	-24	-33	-37.5
Travel	-25 697	-26 784	-26 290	-2 491	-2 167	-2 539	-7 064	-7 197	-1.9
Other services	-17 169	-17 911	-20 183	-1 664	-1 664	-1 670	-4 863	-4 998	-2.8
Memorandum items:									
Tourism related service credits(e)	33 382	33 059	33 565	2 825	3 012	2 878	8 342	8 715	4.5
Tourism related service debits(e)	-31 800	-33 472	-33 441	-3 065	-2 696	-3 172	-8 860	-8 933	-0.8

— nil or rounded to zero (including null cells)

(a) For sign conventions, see paragraph 15 of the Explanatory Notes.

(b) For more detailed trade in services components, see table 11.

(c) Passenger services includes agency fees and commissions for air transport.

(d) Postal and courier services includes indirect commissions for sea transport.

(e) For a more detailed explanation of tourism related services, see paragraph 29 of the Explanatory Notes.

	Dec 2012	Jan 2013	Feb 2013	Mar 2013	Apr 2013	May 2013	Jun 2013	Jul 2013	Aug 2013	Sep 2013
	\$m	\$m	\$m	\$m	\$m	\$m	\$m	\$m	\$m	\$m
SEASONALLY ADJUSTED										
Services credits	4 329	4 402	4 435	4 525	4 421	4 463	4 471	4 529	4 564	4 572
Manufacturing services on physical inputs owned by others(b)	—	—	—	—	—	—	1	1	1	2
Maintenance and repair services n.i.e.(b)	3	4	4	6	6	6	5	12	10	9
Transport	510	516	517	516	496	500	493	490	491	493
Passenger(c)	203	203	204	207	165	173	168	164	166	166
Freight(d)	28	27	26	23	32	30	29	29	30	31
Other	191	188	190	191	205	205	205	208	208	209
Postal and courier services(e)	88	99	97	95	93	92	92	88	87	87
Travel	2 592	2 591	2 610	2 689	2 619	2 634	2 656	2 675	2 735	2 768
Other services	1 224	1 290	1 304	1 314	1 301	1 322	1 315	1 350	1 326	1 300
Services debits	-5 313	-5 354	-5 351	-5 399	-5 363	-5 426	-5 357	-5 355	-5 354	-5 375
Manufacturing services on physical inputs owned by others(b)	—	—	—	—	—	—	—	—	—	—
Maintenance and repair services n.i.e.(b)	-52	-48	-36	-76	-32	-31	-30	-39	-54	-66
Transport	-1 402	-1 408	-1 443	-1 420	-1 419	-1 467	-1 402	-1 433	-1 423	-1 414
Passenger(c)	-588	-601	-619	-613	-611	-631	-578	-559	-557	-558
Freight	-760	-749	-767	-751	-754	-782	-769	-817	-809	-799
Other(b)	-43	-48	-48	-48	-46	-46	-46	-51	-51	-52
Postal and courier services(e)(d)	-11	-9	-9	-9	-8	-8	-9	-6	-6	-6
Travel	-2 179	-2 192	-2 162	-2 193	-2 196	-2 212	-2 232	-2 215	-2 214	-2 215
Other services(d)	-1 681	-1 707	-1 711	-1 710	-1 716	-1 716	-1 694	-1 668	-1 663	-1 680
Memorandum items:										
Tourism related service credits(f)	2 795	2 794	2 813	2 896	2 784	2 807	2 824	2 840	2 902	2 934
Tourism related service debits(f)	-2 767	-2 793	-2 781	-2 805	-2 806	-2 843	-2 810	-2 774	-2 770	-2 772

TREND ESTIMATES (g)

Services credits	4 358	4 396	4 428	4 450	4 465	4 479	4 496	4 517	4 540	4 558
Manufacturing services on physical inputs owned by others	—	—	—	—	—	—	1	1	1	2
Maintenance and repair services n.i.e.	4	4	4	5	6	7	8	9	9	10
Transport	513	516	514	510	504	499	495	492	491	490
Passenger(c)	205	204	199	191	182	175	169	166	163	162
Freight	28	27	27	27	28	29	30	30	30	31
Other	189	190	192	196	199	203	206	208	209	210
Postal and courier services(e)	92	95	96	95	94	92	90	89	88	87
Travel	2 597	2 609	2 620	2 629	2 638	2 651	2 669	2 691	2 714	2 735
Other services	1 243	1 267	1 290	1 306	1 317	1 322	1 324	1 325	1 324	1 322
Services debits	-5 349	-5 362	-5 369	-5 372	-5 375	-5 376	-5 374	-5 370	-5 366	-5 362
Manufacturing services on physical inputs owned by others	—	—	—	—	—	—	—	—	—	—
Maintenance and repair services n.i.e.	-47	-47	-44	-40	-36	-36	-38	-43	-48	-54
Transport	-1 421	-1 424	-1 426	-1 428	-1 430	-1 431	-1 429	-1 425	-1 422	-1 420
Passenger(c)	-602	-607	-612	-614	-611	-601	-588	-574	-562	-553
Freight	-764	-761	-758	-759	-764	-774	-785	-795	-803	-810
Other	-45	-46	-46	-47	-47	-47	-48	-49	-50	-51
Postal and courier services(e)	-10	-10	-9	-9	-9	-8	-8	-7	-7	-6
Travel	-2 185	-2 186	-2 186	-2 191	-2 199	-2 208	-2 214	-2 218	-2 220	-2 220
Other services	-1 697	-1 705	-1 712	-1 713	-1 710	-1 702	-1 693	-1 683	-1 675	-1 669
Memorandum items:										
Tourism related service credits(f)	2 802	2 813	2 819	2 820	2 821	2 826	2 839	2 857	2 878	2 897
Tourism related service debits(f)	-2 787	-2 793	-2 798	-2 805	-2 809	-2 809	-2 802	-2 793	-2 783	-2 772

— nil or rounded to zero (including null cells)

(a) For sign conventions, see paragraph 15 of the Explanatory Notes.

(b) This component is not seasonally adjusted.

(c) Passenger services includes agency fees and commissions for air transport.

(d) In using these seasonally adjusted series, care should be exercised because of the difficulties associated with reliably estimating the seasonal pattern.

(e) Postal and courier services includes indirect commissions for sea transport.

(f) For a more detailed explanation of tourism related services, see paragraph 29 of the Explanatory Notes.

(g) Caution should be used when interpreting recent trend estimates as they may be affected by unusual economic factors. For more details on trend estimates, please see paragraph 19 of the Explanatory Notes.

	CREDITS				DEBITS			
	Dec Qtr	Mar Qtr	Jun Qtr	Sep Qtr	Dec Qtr	Mar Qtr	Jun Qtr	Sep Qtr
	2012	2013	2013	2013	2012	2013	2013	2013
	\$m	\$m	\$m	\$m	\$m	\$m	\$m	\$m
Services	13 211	13 420	13 036	13 603	-16 514	-15 241	-15 826	-16 799
Manufacturing services on physical inputs owned by others	—	—	1	4	—	—	—	—
Maintenance and repair services n.i.e.	12	14	17	31	-147	-160	-93	-159
Transport	1 575	1 607	1 379	1 509	-4 441	-4 033	-4 161	-4 445
Passenger(b)	662	708	424	458	-1 833	-1 740	-1 782	-1 736
Freight	86	73	97	89	-2 460	-2 124	-2 225	-2 522
Other	583	550	602	646	-129	-144	-138	-154
Postal and courier services(c)	244	276	256	316	-19	-25	-16	-33
Travel	7 784	7 976	7 669	8 257	-6 601	-6 115	-6 510	-7 197
Business	1 008	1 081	1 056	1 043	-766	-815	-832	-806
Personal	6 776	6 895	6 613	7 214	-5 835	-5 300	-5 678	-6 391
Education-related	3 295	3 389	3 845	4 041	-207	-248	-213	-336
Other(d)	3 481	3 506	2 768	3 173	-5 628	-5 052	-5 465	-6 055
Construction	9	9	7	15	—	—	—	—
Insurance and pension services	110	107	141	134	-181	-196	-212	-210
Financial services	521	528	577	580	-195	-199	-224	-236
Charges for the use of intellectual property n.i.e.	171	189	202	197	-1 066	-993	-978	-968
Telecommunications, computer and information services	456	473	450	423	-432	-474	-510	-537
Telecommunication services	59	46	49	50	-57	-53	-56	-60
Computer and information services	397	427	401	373	-375	-421	-454	-477
Computer services	312	316	332	305	-303	-322	-368	-384
Information services	20	20	22	21	-23	-36	-26	-31
Other services	65	91	47	47	-49	-63	-60	-62
Other business services	2 125	2 062	2 148	1 989	-2 762	-2 345	-2 505	-2 396
Research and development services	154	162	153	148	-113	-50	-84	-54
Professional and management consulting services	1 030	1 079	1 098	992	-1 138	-1 007	-1 026	-902
Legal, accounting, management consulting, public relations and other professional services	865	861	949	843	-1 068	-937	-952	-850
Advertising, market research and public opinion polling	165	218	149	149	-70	-70	-74	-52
Technical, trade-related and other business services	941	821	897	849	-1 511	-1 288	-1 395	-1 440
Architectural, engineering and other technical services	511	436	469	446	-849	-768	-818	-832
Waste treatment and de-pollution, agricultural and mining services	54	44	83	72	-104	-52	-62	-58
Operational leasing services	82	66	72	69	-181	-182	-155	-127
Trade-related commission services	179	169	161	151	-40	-88	-53	-51
Other business services n.i.e.	115	106	112	111	-337	-198	-307	-372
Personal, cultural and recreational services	216	223	211	225	-438	-483	-387	-410
Audiovisual and related services	35	55	30	41	-364	-344	-326	-355
Other personal, cultural and recreational services	181	168	181	184	-74	-139	-61	-55
Government goods and services n.i.e.	232	232	234	239	-251	-243	-246	-241
Memorandum items:								
Gross insurance premiums receivable / payable	320	301	397	362	-340	-382	-387	-398
Gross insurance claims payable / receivable	-194	-240	-217	-244	217	238	238	248
Tourism related services(e)	8 446	8 684	8 093	8 715	-8 434	-7 855	-8 292	-8 933

— nil or rounded to zero (including null cells)

(a) For sign conventions, see paragraph 15 of the Explanatory Notes.

(b) Passenger services includes agency fees and commissions for air transport.

(c) Postal and courier services includes indirect commissions for sea transport.

(d) Other personal travel includes health-related travel.

(e) For a more detailed explanation of tourism related services, see paragraph 29 of the Explanatory Notes.

				Percent of total merchandise exports(b)	3 MONTHS ENDED SEPTEMBER	
	Jul	Aug	Sep		2012	2013
	2013	2013	2013			
	\$m	\$m	\$m	%	\$m	\$m
MAJOR COMMODITIES (c)						
011 Meat of bovine animals	534	520	509	2.2	1 192	1 563
041 Wheat and meslin	495	395	350	1.5	1 722	1 240
281 Iron ore and concentrates	5 562	6 514	6 634	28.8	12 903	18 710
283 Copper ores and concentrates	424	338	474	2.1	1 239	1 235
285 Aluminium ores and concentrates	483	471	540	2.3	1 290	1 494
287 Ores and concentrates of base metals, n.e.s.	374	296	447	1.9	1 022	1 117
321 Coal, not agglomerated	3 418	3 432	3 364	14.6	10 089	10 214
333 Crude petroleum oils	1 014	887	810	3.5	2 943	2 712
334 Refined petroleum oils	254	304	218	0.9	847	775
343 Natural gas	1 436	1 301	1 342	5.8	4 061	4 079
542 Medicaments	251	325	244	1.1	1 001	821
682 Copper	327	277	238	1.0	779	842
684 Aluminium	284	410	355	1.5	865	1 049
971 Gold, non-monetary	891	1 163	1 122	4.9	3 853	3 176
SECTION AND DIVISION OF THE SITC						
0 Food and live animals						
00 Live animals (excl. fish, crustaceans, molluscs and aquatic invertebrates)	56	82	82	0.4	238	219
01 Meat and meat preparations	777	768	766	3.3	1 780	2 310
02 Dairy products and birds' eggs	127	156	181	0.8	445	463
03 Fish (not marine mammals), crustaceans, molluscs and aquatic invertebrates, and preparations thereof	64	154	63	0.3	284	282
04 Cereals and cereal preparations	778	742	609	2.6	2 286	2 129
05 Vegetables and fruit	227	210	190	0.8	498	628
06 Sugars, sugar preparations and honey	35	17	36	0.2	84	88
07 Coffee, tea, cocoa, spices, and manufactures thereof	21	25	25	0.1	69	72
08 Feeding stuff for animals (excl. unmilled cereals)	91	95	78	0.3	366	264
09 Miscellaneous edible products and preparations	96	91	93	0.4	229	280
<i>Total Food and live animals</i>	<i>2 271</i>	<i>2 340</i>	<i>2 124</i>	<i>9.2</i>	<i>6 280</i>	<i>6 735</i>
1 Beverages and tobacco						
11 Beverages	175	176	176	0.8	538	527
12 Tobacco and tobacco manufactures	5	6	5	—	24	16
<i>Total Beverages and tobacco</i>	<i>180</i>	<i>182</i>	<i>181</i>	<i>0.8</i>	<i>562</i>	<i>544</i>
2 Crude materials, inedible, except fuels						
21 Hides, skins and furskins, raw	104	90	88	0.4	195	282
22 Oil-seeds and oleaginous fruits	183	134	26	0.1	316	343
23 Crude rubber (incl. synthetic and reclaimed)	2	2	1	—	6	6
24 Cork and wood	70	73	83	0.4	218	227
25 Pulp and waste paper	17	20	20	0.1	59	58
26 Textile fibres and their wastes (not manufactured into yarn or fabric)	645	505	509	2.2	1 402	1 658
27 Crude fertilizers (excl. those of Division 56) and crude minerals (excl. coal, petroleum and precious stones)	23	23	26	0.1	111	73
28 Metalliferous ores and metal scrap	7 261	8 189	8 594	37.3	18 249	24 044
29 Crude animal and vegetable materials, n.e.s.	31	30	23	0.1	66	84
<i>Total Crude materials, inedible, except fuels</i>	<i>8 337</i>	<i>9 067</i>	<i>9 369</i>	<i>40.7</i>	<i>20 622</i>	<i>26 773</i>
3 Mineral fuels, lubricants and related materials						
32 Coal, coke and briquettes	3 427	3 451	3 377	14.7	10 161	10 255
33 Petroleum, petroleum products and related materials	1 269	1 192	1 028	4.5	3 796	3 489
34 Gas, natural and manufactured	1 519	1 432	1 429	6.2	4 346	4 379
<i>Total Mineral fuels, lubricants and related materials</i>	<i>6 215</i>	<i>6 074</i>	<i>5 834</i>	<i>25.3</i>	<i>18 304</i>	<i>18 123</i>

— nil or rounded to zero (including null cells)

(a) Some SITC sections and divisions exclude commodities subject to a confidentiality restriction. These are included in Division 98. For more information see paragraphs 26 and 27 of the Explanatory Notes.

(b) Percent of total merchandise is calculated for the most recent month.

(c) The 'Major commodities' section lists commodities at the SITC Rev 4 3-digit level which are the most significant (by value) or are of particular interest. Abbreviated descriptors have been used. The list of 'Major commodities' is reviewed annually.

				Percent of total merchandise exports(b)	3 MONTHS ENDED SEPTEMBER.....		
	Jul	Aug	Sep		2012	2013	
	2013	2013	2013				
	\$m	\$m	\$m	%	\$m	\$m	
SECTION AND DIVISION OF THE SITC							
4	Animal and vegetable oils, fats and waxes						
41	Animal oils and fats	28	24	43	0.2	93	95
42	Fixed vegetable fats and oils, crude, refined or fractionated	21	12	16	0.1	38	49
43	Fats and oils (processed), waxes and inedible mixtures or preparations, of animal or vegetable origin, n.e.s.	2	2	2	—	4	6
	<i>Total Animal and vegetable oils, fats and waxes</i>	51	38	61	0.3	134	150
5	Chemicals and related products, n.e.s.						
51	Organic chemicals	19	17	12	0.1	65	49
52	Inorganic chemicals	74	65	64	0.3	196	204
53	Dyeing, tanning and colouring materials	46	62	65	0.3	134	173
54	Medicinal and pharmaceutical products	317	376	284	1.2	1 163	977
55	Essential oils and resinoids and perfume materials, toilet, polishing and cleansing preparations	57	63	57	0.2	156	176
56	Fertilisers (excl. crude)	23	35	14	0.1	130	72
57	Plastics in primary forms	29	27	24	0.1	87	80
58	Plastics in non-primary forms	29	31	28	0.1	76	88
59	Chemical materials and products, n.e.s.	86	79	93	0.4	238	259
	<i>Total Chemicals and related products, n.e.s.</i>	682	755	642	2.8	2 246	2 079
6	Manufactured goods classified chiefly by material						
61	Leather, leather manufactures and dressed furskins, n.e.s.	19	19	22	0.1	48	59
62	Rubber manufactures, n.e.s.	22	18	15	0.1	55	56
63	Cork and wood manufactures (excl. furniture)	5	8	5	—	22	18
64	Paper, paperboard and articles of paper pulp, of paper or of paperboard	79	87	75	0.3	204	242
65	Textile yarn, fabrics, made-up articles n.e.s. and related products	21	22	19	0.1	67	62
66	Non-metallic mineral manufactures, n.e.s.	79	93	113	0.5	177	285
67	Iron and steel	38	67	50	0.2	132	155
68	Non-ferrous metals	884	956	796	3.5	2 310	2 636
69	Manufactures of metals, n.e.s.	88	106	95	0.4	294	289
	<i>Total Manufactured goods classified chiefly by material</i>	1 235	1 376	1 189	5.2	3 310	3 800
7	Machinery and transport equipment						
71	Power generating machinery and equipment	81	76	75	0.3	248	232
72	Machinery specialized for particular industries	194	157	161	0.7	594	512
73	Metal working machinery	18	14	14	0.1	39	46
74	General industrial machinery and equipment, n.e.s. and machine parts, n.e.s.	171	164	175	0.8	486	511
75	Office machines and automatic data processing machines	121	115	114	0.5	249	349
76	Telecommunications and sound recording and reproducing apparatus and equipment	97	117	104	0.5	271	317
77	Electrical machinery, apparatus and appliances, parts (incl. non electrical counterparts of electrical domestic equip)	129	132	137	0.6	385	397
78	Road vehicles (incl. air-cushion vehicles)	246	314	299	1.3	833	859
79	Transport equipment (excl. road vehicles)	154	171	160	0.7	380	485
	<i>Total Machinery and transport equipment</i>	1 210	1 260	1 239	5.4	3 485	3 708

— nil or rounded to zero (including null cells)

(b) Percent of total merchandise is calculated for the most recent month.

(a) Some SITC sections and divisions exclude commodities subject to a confidentiality restriction. These are included in Division 98. For more information see paragraphs 26 and 27 of the Explanatory Notes.

				Percent of total merchandise exports(b)	3 MONTHS ENDED SEPTEMBER	
	Jul	Aug	Sep		
	2013	2013	2013		2012	2013
	\$m	\$m	\$m	%	\$m	\$m
SECTION AND DIVISION OF THE SITC						
8	Miscellaneous manufactured articles					
81	Prefabricated buildings and sanitary, plumbing, heating and lighting fixtures and fittings, n.e.s.					
	18	14	10	—	34	42
82	Furniture and parts thereof; bedding, mattresses, mattress supports, cushions and similar stuffed furnishings					
	8	9	8	—	22	26
83	Travel goods, handbags and similar containers					
	3	3	3	—	9	9
84	Articles of apparel and clothing accessories					
	19	20	19	0.1	65	58
85	Footwear					
	4	6	6	—	15	15
87	Professional, scientific and controlling instruments and apparatus, n.e.s.					
	170	193	163	0.7	456	526
88	Photographic apparatus, equipment and supplies and optical goods, n.e.s., watches and clocks					
	23	21	22	0.1	58	65
89	Miscellaneous manufactured articles, n.e.s.					
	187	226	225	1.0	559	638
	<i>Total Miscellaneous manufactured articles</i>					
	433	491	456	2.0	1 218	1 379
9	Commodities and transactions not classified elsewhere in the SITC					
93	Special transactions and commodities not classified according to kind					
	99	123	131	0.6	222	352
95	Gold coin whether or not legal tender, and other coin being legal tender					
	50	87	127	0.6	239	264
96	Coin (excl. gold coin) not being legal tender					
	—	—	—	—	—	—
97	Gold, non-monetary (excl. gold ores and concentrates)					
	891	1 163	1 122	4.9	3 853	3 176
98	Combined confidential items excluding some of SITC 28099 (exports only) and some of SITC 51099 (imports only)					
	531	670	552	2.4	1 355	1 752
	<i>Total Commodities and transactions not classified elsewhere in the SITC</i>					
	1 571	2 043	1 932	8.4	5 669	5 545
Total merchandise exports						
	22 184	23 626	23 027	100.0	61 828	68 837
Balance of Payments Adjustments						
	156	140	76	. .	565	372
Goods Credits (exports) on a Balance of Payments Basis						
	22 340	23 766	23 103	. .	62 393	69 209

. . not applicable

— nil or rounded to zero (including null cells)

(a) Some SITC sections and divisions exclude commodities subject to a confidentiality restriction. These are included in Division 98. For more information see paragraphs 26 and 27 of the Explanatory Notes.

(b) Percent of total merchandise is calculated for the most recent month.

	Jul 2013	Aug 2013	Sep 2013	Percentage of total merchandise imports(b)	3 MONTHS ENDED SEPTEMBER	
					2012	2013
					\$m	\$m
MAJOR COMMODITIES (c)						
333 Crude petroleum oils	1 857	1 546	1 751	8.2	5 605	5 155
334 Refined petroleum oils	1 554	1 425	1 576	7.4	3 680	4 555
542 Medicaments	771	631	598	2.8	2 057	2 000
625 Rubber tyres, treads, flaps and inner tubes for wheels	255	252	207	1.0	825	714
723 Civil engineering and contractors' plant and equipment	316	257	247	1.2	1 495	820
743 Air pumps, compressors or fans; hoods; centrifuges; filtering apparatus; parts	400	254	219	1.0	716	873
752 Automatic data processing machines	606	541	536	2.5	1 520	1 683
764 Telecommunications equipment	721	671	918	4.3	2 253	2 311
781 Motor cars for the transport of persons	1 635	1 729	1 340	6.3	4 058	4 704
782 Motor vehicles for the transport of goods	563	591	393	1.8	2 298	1 547
784 Parts and accessories of the motor vehicles	266	258	242	1.1	789	767
821 Furniture, bedding, mattresses and supports, and stuffed furnishings	300	322	309	1.5	792	931
971 Gold, non-monetary	618	508	360	1.7	1 602	1 486
SECTION AND DIVISION OF THE SITC						
0 Food and live animals						
00 Live animals other than fish, crustaceans, molluscs and aquatic invertebrates	6	8	4	—	16	18
01 Meat and meat preparations	41	53	50	0.2	158	144
02 Dairy products and birds' eggs	64	63	59	0.3	137	186
03 Fish (not marine mammals), crustaceans, molluscs and aquatic invertebrates, and preparations thereof	125	130	139	0.7	332	394
04 Cereals and cereal preparations	96	106	108	0.5	243	310
05 Vegetables and fruit	167	187	167	0.8	454	520
06 Sugars, sugar preparations and honey	33	39	51	0.2	99	124
07 Coffee, tea, cocoa, spices, and manufactures thereof	135	154	131	0.6	357	420
08 Feeding stuff for animals (excl. unmilled cereals)	60	73	53	0.2	202	186
09 Miscellaneous edible products and preparations	170	175	181	0.9	472	526
<i>Total Food and live animals</i>	895	990	943	4.4	2 470	2 828
1 Beverages and tobacco						
11 Beverages	148	177	188	0.9	458	513
12 Tobacco and tobacco manufactures	42	46	58	0.3	80	146
<i>Total Beverages and tobacco</i>	191	223	246	1.2	538	659
2 Crude materials, inedible, except fuels						
21 Hides, skins and furskins, raw	—	—	—	—	—	1
22 Oil-seeds and oleaginous fruits	5	6	4	—	12	15
23 Crude rubber (incl. synthetic and reclaimed)	10	10	7	—	30	27
24 Cork and wood	61	57	54	0.3	155	173
25 Pulp and waste paper	20	20	11	0.1	38	51
26 Textile fibres and their wastes (not manufactured into yarn or fabric)	9	9	9	—	23	27
27 Crude fertilizers (excl. those of Division 56) and crude minerals (excl. coal, petroleum and precious stones)	31	15	27	0.1	103	74
28 Metalliferous ores and metal scrap	50	47	62	0.3	178	159
29 Crude animal and vegetable materials, n.e.s.	38	35	34	0.2	96	106
<i>Total Crude materials, inedible, except fuels</i>	225	198	210	1.0	636	632
3 Mineral fuels, lubricants and related materials						
32 Coal, coke and briquettes	1	10	2	—	3	13
33 Petroleum, petroleum products and related materials	3 477	3 044	3 411	16.0	9 445	9 932
34 Gas, natural and manufactured	302	251	281	1.3	663	834
<i>Total Mineral fuels, lubricants and related materials</i>	3 780	3 305	3 693	17.4	10 111	10 779

— nil or rounded to zero (including null cells)

(a) Some SITC sections and divisions exclude commodities subject to a confidentiality restriction. These are included in Division 98. For more information see paragraphs 26 and 28 of the Explanatory Notes.

(b) Percent of total merchandise is calculated for the most recent month.

(c) The 'Major commodities' section lists commodities at the SITC Rev 4 3-digit level which are the most significant (by value) or are of particular interest. Abbreviated descriptors have been used. The list of 'Major commodities' is reviewed annually.

				Percentage of total merchandise imports(b)	3 MONTHS ENDED SEPTEMBER.....		
	Jul	Aug	Sep		2012	2013	
	2013	2013	2013				
	\$m	\$m	\$m	%	\$m	\$m	
SECTION AND DIVISION OF THE SITC							
4	Animal and vegetable oils, fats and waxes						
41	Animal oils and fats	5	7	3	—	18	15
42	Fixed vegetable fats and oils, crude, refined or fractionated	39	30	52	0.2	110	121
43	Fats and oils (processed), waxes and inedible mixtures or preparations, of animal or vegetable n.e.s.	4	4	4	—	15	12
	<i>Total Animal and vegetable oils, fats and waxes</i>	48	41	60	0.3	143	148
5	Chemicals and related products, n.e.s.						
51	Organic chemicals	199	206	182	0.9	746	587
52	Inorganic chemicals	116	133	104	0.5	447	353
53	Dyeing, tanning and colouring materials	60	61	54	0.3	158	176
54	Medicinal and pharmaceutical products	984	831	797	3.7	2 692	2 612
55	Essential oils and resinoids and perfume materials; toilet, polishing and cleansing preparations	206	220	225	1.1	547	652
56	Fertilisers (excl. crude)	152	163	60	0.3	354	376
57	Plastics in primary forms	161	165	160	0.8	388	486
58	Plastics in non-primary forms	139	142	144	0.7	366	425
59	Chemical materials and products, n.e.s.	194	212	203	1.0	554	609
	<i>Total Chemicals and related products, n.e.s.</i>	2 213	2 133	1 929	9.1	6 253	6 276
6	Manufactured						
61	Leather, leather manufactures, and dressed furskins, n.e.s.	14	12	13	0.1	35	39
62	Rubber manufactures, n.e.s.	337	341	277	1.3	1 062	955
63	Cork and wood manufactures (excl. furniture)	74	78	76	0.4	196	228
64	Paper, paperboard and articles of paper pulp, of paper or of paperboard	229	237	250	1.2	677	717
65	Textile yarn, fabrics, made-up articles n.e.s., and related products	243	277	247	1.2	658	767
66	Non-metallic mineral manufactures, n.e.s.	240	252	261	1.2	630	754
67	Iron and steel	337	297	339	1.6	1 130	974
68	Non-ferrous metals	171	342	268	1.3	630	780
69	Manufactures of metals, n.e.s.	654	784	728	3.4	1 797	2 166
	<i>Total Manufactured goods classified chiefly by material</i>	2 300	2 620	2 460	11.6	6 814	7 379
7	Machinery and transport equipment						
71	Power generating machinery and equipment	443	480	454	2.1	1 067	1 378
72	Machinery specialized for particular industries	821	702	567	2.7	2 840	2 090
73	Metal working machinery	48	52	42	0.2	164	143
74	General industrial machinery and equipment, n.e.s., and machine parts, n.e.s.	1 291	1 234	1 335	6.3	3 376	3 860
75	Office machines and automatic data processing machines	848	760	770	3.6	2 161	2 377
76	Telecommunications and sound recording and reproducing apparatus and equipment	940	921	1 160	5.5	2 930	3 020
77	Electrical machinery, apparatus, appliances, parts (incl. non-elec. counterparts of electrical domestic equip)	1 016	1 043	1 035	4.9	2 860	3 094
78	Road vehicles (incl. air-cushion vehicles)	2 639	2 782	2 201	10.4	7 671	7 622
79	Transport equipment (excl. road vehicles)	388	301	374	1.8	531	1 062
	<i>Total Machinery and transport equipment</i>	8 434	8 274	7 939	37.3	23 599	24 647

— nil or rounded to zero (including null cells)

(b) Percent of total merchandise is calculated for the most recent month.

(a) Some SITC sections and divisions exclude commodities subject to a confidentiality restriction. These are included in Division 98. For more information see paragraphs 26 and 28 of the Explanatory Notes.

					3 MONTHS ENDED SEPTEMBER.....			
					Percentage of total merchandise imports(b)	2012	2013	
					Jul 2013	Aug 2013	Sep 2013	
					\$m	\$m	\$m	
						%	\$m	\$m
SECTION AND DIVISION OF THE SITC								
8	Miscellaneous manufactured articles							
81	Prefabricated buildings; sanitary, plumbing, heating and lighting fixtures and fittings, n.e.s.	125	142	143	0.7	334	409	
82	Furniture, parts thereof; bedding, mattresses, mattress supports, cushions and similar stuffed furnishings	300	322	309	1.5	792	931	
83	Travel goods, handbags and similar containers	95	94	105	0.5	250	294	
84	Articles of apparel and clothing accessories	622	645	595	2.8	1 616	1 863	
85	Footwear	163	182	154	0.7	432	498	
87	Professional, scientific and controlling instruments and apparatus, n.e.s.	512	458	443	2.1	1 312	1 413	
88	Photographic apparatus, equipment and supplies and optical goods, n.e.s., watches and clocks	135	137	139	0.7	369	411	
89	Miscellaneous manufactured articles, n.e.s.	1 043	1 029	1 031	4.8	2 631	3 103	
	<i>Total Miscellaneous manufactured articles</i>	2 994	3 008	2 918	13.7	7 736	8 921	
9	Commodities and transactions not classified elsewhere in the SITC							
93	Special transactions and commodities not classified according to kind	1	1	1	—	9	2	
95	Gold coin whether or not legal tender, and other coin being legal tender	3	4	3	—	9	10	
96	Coin (excl. gold coin) not being legal tender	1	—	2	—	2	2	
97	Gold, non-monetary (excl. gold ores and concentrates)	618	508	360	1.7	1 602	1 486	
98	Combined confidential items excluding some of SITC 28099 (exports only) and some of SITC 51099 (imports only)	341	395	503	2.4	1 471	1 238	
	<i>Total Commodities and transactions not classified elsewhere in the SITC</i>	963	908	868	4.1	3 095	2 739	
	Total merchandise imports	22 042	21 699	21 267	100.0	61 395	65 008	
	Balance of Payments Adjustments	1 297	1 734	1 168	..	4 662	4 199	
	Goods Debits (imports) on a Balance of Payments Basis	23 339	23 433	22 435	..	66 057	69 207	

.. not applicable
— nil or rounded to zero (including null cells)

(a) Some SITC sections and divisions exclude commodities subject to a confidentiality restriction. These are included in Division 98. For more information see paragraphs 26 and 28 of the Explanatory Notes.

(b) Percent of total merchandise is calculated for the most recent month.

	EXPORTS(a)				IMPORTS(b)				BALANCE OF MERCHANDISE TRADE	
	2012-13	Sep	3 months ended	3 months ended	2012-13	Sep	3 months ended	3 months ended	2012-13	3 months ended
		2013	September 2012	September 2013		2013	September 2012	September 2013		September 2013
	\$m	\$m	\$m	\$m	\$m	\$m	\$m	\$m	\$m	\$m
Belgium	1 436	33	202	160	1 594	115	367	417	-158	-257
Brazil	737	73	251	192	579	48	167	147	158	44
Canada	1 568	138	429	360	2 154	165	558	565	-586	-205
China	77 973	8 654	16 680	25 070	44 478	4 700	11 400	13 253	33 495	11 817
Denmark	192	8	26	24	896	69	267	287	-705	-263
Egypt(a)	512	13	110	66	59	2	15	5	453	61
Fiji	304	23	86	74	167	15	45	46	138	28
Finland	159	3	65	10	860	58	222	195	-701	-185
France	1 190	67	278	233	3 900	339	980	1 056	-2 710	-823
Germany	1 977	172	590	445	10 930	925	2 859	3 057	-8 953	-2 612
Hong Kong (SAR of China)	2 452	253	650	750	1 247	121	340	339	1 206	411
India	11 418	713	2 917	2 140	2 385	232	667	717	9 033	1 423
Indonesia	4 750	359	1 123	993	6 049	441	1 667	1 595	-1 299	-602
Iran	557	1	101	6	27	2	7	6	530	—
Iraq	593	24	72	45	—	—	—	—	593	45
Ireland	74	5	24	17	1 501	127	412	387	-1 428	-370
Israel	226	18	73	60	673	59	185	181	-447	-122
Italy	715	45	174	131	5 514	572	1 361	1 659	-4 798	-1 527
Japan	46 481	4 096	12 868	12 712	18 346	1 666	4 632	5 167	28 135	7 544
Korea, Republic of	19 116	1 652	5 260	5 017	9 214	977	2 282	2 743	9 902	2 274
Kuwait	490	70	107	159	450	11	120	76	40	84
Malaysia	5 197	371	1 363	1 174	8 936	964	2 460	2 424	-3 740	-1 250
Mexico	623	49	169	98	2 163	140	531	508	-1 540	-410
Netherlands	2 485	174	645	562	1 802	128	434	434	683	128
New Zealand	7 309	634	1 949	1 922	7 068	629	1 798	1 955	241	-33
Pakistan	632	33	232	99	179	15	39	52	453	47
Papua New Guinea	2 759	179	843	667	3 004	351	741	949	-245	-282
Philippines	1 692	152	478	427	531	73	135	227	1 161	200
Saudi Arabia	1 974	132	384	471	382	6	137	56	1 592	416
Singapore	6 420	754	2 333	1 772	14 329	1 131	3 139	3 092	-7 909	-1 321
South Africa	1 380	97	346	341	853	147	261	321	527	19
Spain	465	37	150	110	2 933	199	581	761	-2 468	-650
Sweden	260	54	119	117	2 297	158	562	573	-2 037	-456
Switzerland	670	87	160	251	2 876	283	745	819	-2 205	-568
Taiwan	7 531	630	2 132	1 975	3 859	323	983	1 059	3 673	916
Thailand	4 959	390	1 089	1 095	11 129	904	2 944	3 227	-6 170	-2 133
Turkey	805	12	290	235	558	52	123	190	247	45
United Arab Emirates	2 322	242	511	660	3 270	147	824	821	-949	-161
United Kingdom	5 520	227	1 565	829	6 365	507	1 796	1 633	-845	-804
United States of America	9 022	851	2 270	2 455	25 660	1 983	7 158	6 622	-16 639	-4 167
Viet Nam	1 809	181	407	565	3 557	419	1 021	1 007	-1 749	-442
Other Countries(b) (a)	10 297	1 323	2 306	4 348	23 878	2 060	6 426	6 379	-13 581	-2 031
Total	247 050	23 027	61 828	68 837	236 652	21 267	61 395	65 008	10 398	3 829
APEC	200 847	19 445	50 375	57 422	165 991	15 328	42 756	45 871	34 856	11 552
ASEAN	25 028	2 221	6 834	6 080	45 654	4 031	11 601	11 899	-20 626	-5 818
Developing Countries	162 487	15 488	39 130	45 638	129 841	12 060	33 245	35 930	32 647	9 708
Least Developed Countries	2 445	160	545	623	804	104	193	265	1 641	358
European Union(c)	15 038	910	3 934	2 806	41 729	3 487	10 655	11 426	-26 692	-8 621
OECD	101 127	8 432	27 520	26 021	112 930	9 618	29 324	30 771	-11 803	-4 750

— nil or rounded to zero (including null cells)

(a) Exports of Alumina to Bahrain, Egypt and Iceland are excluded from individual country totals and included in 'Other Countries' up to December 2012. From June 2013, exports data with confidentiality restrictions 'No commodity details' or 'No value details' are excluded from individual country totals and included in 'Other Countries'. See Explanatory Notes paragraphs 26 and 27 for more details.

(b) From September 2008 imports data with confidentiality restrictions 'No commodity details' or 'No value details' are excluded from individual country totals and included in 'Other Countries'. See Explanatory Notes paragraphs 26 and 28 for more details.

(c) The European Union includes 28 member countries for all periods.

	2012-13	Sep 2013	3 MONTHS ENDED SEPTEMBER	
			2012	2013
			\$m	\$m
EXPORTS (a)(b)				
New South Wales	37 011	3 027	9 628	9 567
Victoria	21 720	1 947	5 377	5 986
Queensland	44 440	3 932	11 494	11 835
South Australia	10 720	926	2 654	2 976
Western Australia	115 630	11 104	28 141	32 069
Tasmania	3 031	210	721	625
Northern Territory	5 958	533	1 638	1 661
Australian Capital Territory	7	1	—	1
State not available for publication(b)	774	552	78	1 752
Re-exports	7 759	795	2 096	2 366
Total	247 050	23 027	61 828	68 837
IMPORTS (c)(d)				
New South Wales	84 649	7 693	21 739	22 964
Victoria	58 552	5 291	15 026	16 704
Queensland	42 246	3 672	10 807	11 306
South Australia	7 055	607	1 844	2 153
Western Australia	33 833	3 019	9 244	9 148
Tasmania	693	70	147	206
Northern Territory	5 129	411	1 114	1 288
Australian Capital Territory	12	—	2	1
State not available for publication(d)	4 483	503	1 471	1 238
Total	236 652	21 267	61 395	65 008

— nil or rounded to zero (including null cells)

- (a) Exports by state of origin in which the final stage of production or manufacture occurs.
- (b) Exports of Alumina to Bahrain, Egypt and Iceland are excluded from individual state totals and included in 'State not available for publication' up to December 2012. From June 2013, exports data with confidentiality restrictions 'No commodity details' or 'No value details' are excluded from individual state totals and included in 'State not available for publication'. See Explanatory Notes paragraphs 26 and 27 for more details.
- (c) Imports by state of destination.
- (d) From September 2008 imports data with confidentiality restrictions 'No commodity details' or 'No value details' are excluded from individual state totals and included in 'State not available for publication'. See Explanatory Notes paragraphs 26 and 28 for more details.

PERIOD AVERAGE EXCHANGE RATES(a), Per Australian dollar

<i>Period</i>	<i>United States dollar</i>	<i>UK pound sterling</i>	<i>Euro</i>	<i>Japanese yen</i>	<i>Special Drawing Right</i>	<i>Trade-weighted index of value of the A\$(b)</i>
FINANCIAL YEAR						
2010-11	0.9891	0.6213	0.7248	82.10	0.6346	74.0
2011-12	1.0319	0.6516	0.7712	81.14	0.6629	76.0
2012-13	1.0268	0.6548	0.7941	89.89	0.6752	77.0
MONTHS						
2012						
July	1.0293	0.6600	0.8368	81.30	0.6829	77.4
August	1.0468	0.6664	0.8447	82.36	0.6922	78.3
September	1.0395	0.6455	0.8085	81.24	0.6766	76.9
October	1.0292	0.6405	0.7937	81.31	0.6681	75.9
November	1.0410	0.6517	0.8110	84.24	0.6807	77.0
December	1.0468	0.6487	0.7985	87.59	0.6805	77.5
2013						
January	1.0503	0.6572	0.7911	93.35	0.6842	78.2
February	1.0319	0.6658	0.7723	96.06	0.6752	77.6
March	1.0333	0.6854	0.7967	97.97	0.6870	78.4
April	1.0387	0.6789	0.7977	101.53	0.6906	78.8
May	0.9920	0.6482	0.7638	99.93	0.6614	75.7
June	0.9432	0.6090	0.7148	91.83	0.6233	72.1
July	0.9172	0.6039	0.7009	91.37	0.6102	70.6
August	0.9043	0.5837	0.6788	88.42	0.5954	69.5
September	0.9278	0.5853	0.6952	92.05	0.6096	71.3

(a) These exchange rates and the trade-weighted index are derived using rates provided by the Reserve Bank of Australia in respect of each trading day.

(b) May 1970 = 100. The Trade-weighted index is reweighted annually on 1 December.

	2010–11	2011–12	2012–13	Mar 2013	Apr 2013	May 2013	Jun 2013	Jul 2013	Aug 2013
	\$m	\$m	\$m	\$m	\$m	\$m	\$m	\$m	\$m
BALANCE									
On goods and services	—	—	-303	-47	-115	-76	-35	-119	-29
CREDITS									
Total goods and services	—	—	-98	-42	-25	-10	-21	-119	-32
<i>Total goods</i>	—	—	-99	-42	-25	-10	-22	-108	-132
Rural goods	—	—	8	3	1	5	-1	—	-25
Non-rural goods	—	—	-116	-45	-26	-21	-24	-106	-107
Net exports of goods under merchandising	—	—	—	—	—	—	—	—	—
Non-monetary gold	—	—	9	—	—	6	3	-2	—
<i>Total services</i>	—	—	1	—	—	—	1	-11	100
DEBITS									
Total goods and services	—	—	-205	-5	-90	-66	-14	—	3
<i>Total goods</i>	—	—	-160	-2	-87	-62	-9	6	11
Consumption goods	—	—	—	—	—	-1	1	-4	-2
Capital goods	—	—	-145	—	-82	-63	—	-2	6
Intermediate and other merchandise goods	—	—	-15	-2	-5	2	-10	12	7
Non-monetary gold	—	—	—	—	—	—	—	—	—
<i>Total services</i>	—	—	-45	-3	-3	-4	-5	-6	-8

— nil or rounded to zero (including null cells)

(a) This table is presented consistent with BPM6 sign conventions. This means for the balance on goods and services a negative revision indicates a decrease in a surplus or an increase in a deficit. For debits a negative revision indicates an increase in debits while a positive revision indicates a decrease in debits.

EXPLANATORY NOTES

INTRODUCTION

1 This publication presents preliminary estimates of Australia's international trade in goods and services on a balance of payments basis (tables 1–11 and 17) and merchandise import and export statistics on an international merchandise trade basis (tables 12–15). In addition, table 16 Exchange rates and trade-weighted indexes (TWI) are derived by using exchange rates and indexes provided by the Reserve Bank of Australia (RBA). As of December 2011 the RBA has changed the methodology for compiling the TWI to include both merchandise and services trade, rather than merchandise trade only. This takes advantage of country-level services trade data that have been published by the Australian Bureau of Statistics (ABS).

2 Merchandise trade statistics on an international merchandise trade basis are compiled from information submitted by exporters and importers or their agents to the Australian Customs and Border Protection Service (Customs and Border Protection). Adjustments for coverage, timing and valuation are made to international merchandise trade data to convert them to a balance of payments basis. The services data are sourced from the quarterly Survey of International Trade in Services and a range of administrative data and indicator series.

3 More comprehensive quarterly estimates of Australia's trade in goods and services, together with comprehensive details of Australia's balance of payments are included in the quarterly publication, *Balance of Payments and International Investment Position, Australia* (cat. no. 5302.0). Detailed monthly statistics on merchandise trade are available in Time Series Spreadsheets on the ABS website or by subscription to tailored services. More information on the *International Trade in Services by Country, by State and by Detailed Services Category* are available on a financial year basis (cat. no. 5368.0.55.003) following the September issue of this publication and calendar year basis (cat. no. 5368.0.55.004) following the March issue of this publication.

CONCEPTS, SOURCES AND METHODS

4 The conceptual framework used in compiling Australia's merchandise trade statistics can be found in *International Merchandise Trade, Australia: Concepts, Sources and Methods, 2001* (cat. no. 5489.0).

5 The conceptual framework used in compiling Australia's balance of payments statistics is based on the International Monetary Fund's *Balance of Payments and International Investment Position Manual, Sixth Edition* (BPM6). Descriptions of the underlying concepts and structure of the balance of payments and the sources, methods and terms used in compiling estimates are presented in the publication *Balance of Payments and International Investment Position, Australia: Concepts, Sources and Methods, 1998* (cat. no. 5331.0). This version reflects the international standards prior to BPM6 and is currently being revised. The first part of the revised document was released on 8 March 2011, featuring only the Goods Account. Other components will be released as they become available. Further information on the key changes introduced with BPM6 can be found in the *Information paper: Implementation of new international statistical standards in the ABS National and International Accounts, September 2009* (cat. no. 5310.0.55.002).

6 To bring merchandise trade statistics on an international merchandise trade basis to a balance of payments basis, timing adjustments are made to ensure that the transaction is recorded in the period in which ownership changed, rather than in the period in which the transaction was recorded by Customs and Border Protection or the period in which the goods arrived in/departed from an Australian port. Adjustments are also made to account for the change of ownership of goods not included in merchandise trade statistics. Chapter 6 of cat. no. 5331.0 provides more detail on the relationship between statistics on an international merchandise trade basis and on a balance of payments basis.

EXPLANATORY NOTES *continued*

CONCEPTS, SOURCES AND METHODS *continued*

7 International merchandise trade exports data presented for recent months in tables 12–15 of this publication are based on information initially reported by exporters to Customs and Border Protection. At the time of initial reporting to Customs and Border Protection the final prices may not be known for some commodities. Therefore, the information recorded for recent months for commodities like iron ore and coal can include a variety of prices including previous or current contract prices and the prevailing spot prices. Newly negotiated contract prices may not be fully reflected in the data first reported to Customs and Border Protection, and to compensate for this, the balance of payments series may reflect adjusted price levels.

8 The Concepts, Sources and Methods publications and information papers are available to download for free from the ABS website. Select *Statistics*, then select *By Catalogue Number*, and then the catalogue numbers as above.

CLASSIFICATIONS

9 The merchandise trade data on an international merchandise trade basis are presented using the following commodity classifications:

- the Harmonized System 2012 (available on request)
- the Standard International Trade Classification (SITC Revision 4)
- the Classification by Broad Economic Categories (BEC)
- the industry classification: Australian and New Zealand Standard Industrial Classification, 2006 (ANZSIC 06) from July 2005.

10 The balance of payments 'goods and services' series are presented according to three classifications with the goods classifications derived from SITC Revision 4 and BEC. The classifications are:

- for goods:
 - the Balance of Payments Commodities for Exports (BoPCE)
 - the Balance of Payments Broad Economic Categories (BoPBEC) for Imports
- for services:
 - the Extended Balance of Payments Services Classification (EBOPS).

ACCURACY, RELIABILITY AND REVISIONS

11 While every effort is made to ensure the accuracy and reliability of estimates, most series are subject to revision as more complete and accurate information becomes available. Care should be exercised in the use and interpretation of estimates in this publication. The transactions occurring in international trade in goods and services are of many different kinds, and therefore the compilation of trade estimates entails the use of a very wide range of statistical data of varying degrees of accuracy and timeliness. For further information on the monthly services series, see paragraph 25.

12 The revisions are applied differently for merchandise trade and balance of payments series. Each month, merchandise trade data are revised for the previous six months to incorporate latest available data.

13 For the balance of payments 'goods and services' series, in original terms, revisions in the July, October, January or April issues are limited to significant new and revised data from survey sources that have become available since the previous issue. This is to ensure the monthly series align with the comparable series in the most recent issue of the *Balance of Payments and International Investment Position, Australia* (cat. no. 5302.0). In the September issue revisions can be applied to the four previous financial years. In other issues revisions can be applied to the previous and current financial years to incorporate the latest available survey and administrative data.

14 In seasonally adjusted and trend terms, revisions may occur at any time point but tend to focus on the most recent estimates. Please also refer to paragraphs 17 and 18 (seasonal adjustment), and 19 (trend estimates) below.

EXPLANATORY NOTES *continued*

SIGN CONVENTION

15 In keeping with BPM6 conventions, balance of payments basis credit entries are shown with an implied positive sign and debit items are shown as negative entries. For statistics on an international merchandise trade basis, both imports and exports are shown without sign. The calculation of percentage changes on balance of payments debit items are made without regard to sign. References to balance of payments debit items in Key Figures, Key Points, and Analysis and Comments are also made without regard to sign.

SEASONALLY ADJUSTED AND TREND ESTIMATES

16 The estimates of international trade in goods and services on a balance of payments basis are seasonally adjusted, however the merchandise exports and imports statistics on an international merchandise trade basis are not. Monthly original estimates are volatile, being subject to calendar-related and large irregular influences. Seasonally adjusted estimates are derived by estimating and removing from the original series systematic calendar related effects, such as seasonal (e.g. Christmas), trading day and moving holiday (e.g. Easter) influences. Seasonal adjustment does not aim to remove the irregular or non-seasonal influences which may be present in any particular month. These irregular influences may reflect both random economic events and difficulties of statistical recording.

17 The seasonally adjusted statistics in this publication use the concurrent seasonal adjustment technique and Autoregressive Integrated Moving Average (ARIMA) modelling to estimate factors for the current and previous months. Under concurrent seasonal adjustment, the estimates of seasonal factors are fine tuned as new or revised original estimates become available each period. The seasonally adjusted estimates are subject to revisions at each reference month as the estimates of seasonal factors are improved.

18 ARIMA modelling relies on the characteristics of the series being analysed to project future period data. ARIMA modelling is used on a case-by-case basis where it results in reduced revisions to seasonally adjusted series when subsequent data becomes available. The projected values are temporary, intermediate values, that are only used internally to improve the estimation of the seasonal factors. The projected data do not affect the original estimates and are discarded at the end of the seasonal adjustment process. The ARIMA model is assessed as part of the annual review and, following the 2013 annual review, the majority of directly seasonally adjusted trade in goods and services time series use an ARIMA model.

19 The month-to-month movements of the seasonally adjusted estimates may not be reliable indicators of underlying behaviour because they include irregular or non-seasonal movements. Trend estimates reduce the effect of these movements as they are derived by applying a 13-term Henderson moving average to the seasonally adjusted series. The 13-term Henderson moving average (like all Henderson averages) is symmetric, but as the end of a time series is approached, asymmetric forms of the average are applied. While the asymmetric weights enable trend estimates for recent months to be produced, it does result in revisions to the estimates for the most recent six months as additional observations become available. Revisions to trend estimates can also occur because of revisions to the original data and as a result of the re-estimation of the seasonal factors. Trend estimates should be used with caution, especially around the time of unusual influences, until these have been appropriately taken into account.

20 Information papers and articles on time series methods are available on the ABS website:

- for seasonal adjustment methods, see *Information Paper: An Introductory Course on Time Series Analysis, Jan 2005* (cat. no. 1346.0.55.001) and *Time Series Analysis Frequently Asked Questions, 2003* (cat. no. 1346.0.55.002)

EXPLANATORY NOTES *continued*

SEASONALLY ADJUSTED AND TREND ESTIMATES *continued*

- for ARIMA modelling, see *Feature article: Use of ARIMA modelling to reduce revisions* in the October 2004 issue of *Australian Economic Indicators* (cat. no. 1350.0)
- for trend estimates methods, see *Information Paper: A Guide to Interpreting Time Series – Monitoring Trends* (cat. no. 1349.0)
- alternatively contact the Assistant Director, Time Series Analysis on (02) 6252 6345 or e-mail: time.series.analysis@abs.gov.au.

ECONOMIC TERRITORY

21 In accordance with BPM6 definitions, Australia's economic territory, on a balance of payments basis, is the area under the effective control of the Australian government. It includes the land area, airspace, territorial waters, including jurisdiction over fishing rights and rights to fuels and minerals. Australian economic territory also includes territorial enclaves in the rest of the world. These are clearly demarcated areas of land, located in other countries and which are owned or rented by the Australian government for diplomatic, military, scientific or other purposes. Specifically, the economic territory of Australia consists of:

- Geographic Australia which includes Cocos (Keeling) Islands and Christmas Island;
- Norfolk Island;
- Australian Antarctic Territory;
- Heard Island and McDonald Islands;
- Territory of Ashmore Reef and Cartier Island;
- Coral Sea Islands;
- Australia's territorial enclaves overseas; and
- the Joint Petroleum Development Area (joint territory between Australia and Timor-Leste).

22 Because of administrative complexities and measurement difficulties, Norfolk Island transactions with the rest of the world will not always be captured in all relevant balance of payments statistics. Most of the transactions involving Norfolk Island are not material to Australia's trade performance and not capturing these transactions will not distort these statistics. However, any significant transactions will be identified and included in the relevant statistics.

COMMODITY BREAKDOWN OF GOODS

23 For details of the classifications used to present goods exports (credits) and imports (debits) on a balance of payments basis, see tables 6.6 and 6.7, respectively, in *Balance of Payments and International Investment Position, Australia: Concepts, Sources and Methods* (cat. no. 5331.0).

24 The international merchandise trade statistics shown in tables 12 and 13 are classified by the Standard International Trade Classification (SITC). Imports and exports of goods at a more detailed level are available from the time series spreadsheets on the ABS website. All data from July 2005 are presented according to SITC Rev 4 and data prior to July 2005 are presented according to SITC Rev 3. For details refer to the 'Classifications and Standards Update' in the July 2008 issue of this publication.

MONTHLY SERVICES SERIES

25 Monthly indicators for many of the services components that are only surveyed quarterly are not available. Monthly estimates for the freight and other transportation components of services credits in table 9 are derived by dividing the quarterly estimate by three. Freight debits are derived directly from imports data for the reference month as a difference between total merchandise cost, insurance and freight (CIF) and free on board (FOB), adjusted to reflect timing and processing adjustments. For freight credits and other transportation credits and debits, estimates are derived by extrapolating the last quarter's data by an average of movements for the same quarter over the three previous years, and then dividing the estimate by three. Similarly other services estimates are derived by extrapolating the last quarter's data by an average of movements for the same quarter over the previous three years, and then dividing the estimate by three.

EXPLANATORY NOTES *continued*

CONFIDENTIALITY OF MERCHANDISE TRADE STATISTICS

26 The release of statistics for certain merchandise trade commodities is restricted in order to prevent the identification of the activities of an individual business, where this is requested by the business concerned. These restrictions do not affect the total value of exports and imports, but they can affect statistics at the country, state and commodity levels, and other details only available on request such as Australian Ports. For information on the confidentiality restrictions applied to the merchandise trade statistics in this publication, refer to the current issue of *International Merchandise Trade: Confidential Commodities List (CCL)* (cat. no. 5372.0.55.001).

27 Exports data that have the confidentiality restrictions 'No commodity details' or 'No value details' are now aggregated into a single confidential commodity code. For data prior to June 2013, these data are added back into the appropriate state total and country total (i.e. these totals show the correct level of trade). From June 2013 these confidential data are not added back. Instead the confidential data are published as 'No country details' in the country totals and 'State of origin not available' or 'State not available for publication' in the state totals. Therefore, country and state totals from June 2013 may not represent the actual amount of trade in each country/state but only the trade in commodities without a 'No commodity details' or 'No value details' restriction.

28 Imports data that have the confidentiality restrictions 'No commodity details' or 'No value details' are aggregated into a single confidential commodity code. For data prior to September 2008, these data are added back into the appropriate state total and country total (i.e. these totals show the correct level of trade). From September 2008 these confidential data are not added back. Instead the confidential data are published as 'No country details' in the country totals and 'State of destination not available' or 'State not available for publication' in the state totals. Therefore, country and state totals from September 2008 may not represent the actual amount of trade in each country/state but only the trade in commodities without a 'No commodity details' or 'No value details' restriction.

TOURISM RELATED SERVICES

29 The tourism related services memorandum items provide timely indicators of the movements in tourism related activities, not an absolute measure of the level of these activities. The tourism related indicator has been derived by combining total travel services (business, education-related and other personal travel) and passenger transportation services (which includes agency fees and commissions for air transport).

SERVICES BY STATE AND BY PARTNER COUNTRY

30 Annual services data by state, by country and detailed services are released twice yearly. Calendar year data are usually released following the March issue of this publication and financial year data are usually released following the September issue. Refer to time series data under trade in services data cubes for details.

31 Services credits are classified by the state of provision, while services debits are classified by the state of consumption. The state allocations for transportation, travel, postal and courier, and telecommunication services are based on a number of indicators including merchandise trade statistics by state, overseas passenger arrivals and departures by state of clearance and data provided by the Department of Immigration and Citizenship. The allocation for other services (about 25% of all trade in services) is primarily based on the location of the business reporting the information, which serves as a proxy for the state of provision/consumption of that service. The data should be used with care but are considered suitable for analysis over time.

32 A comprehensive explanation of the data sources used and the methodology applied in the compilation of partner country statistics is provided in Chapter 17 of *Balance of Payments and International Investment Position, Australia: Concepts, Sources and Methods* (cat. no. 5331.0). Approximately 5% of total services credits and debits for both 2009–10 and 2010–11 were either confidential, or unable to be allocated to individual countries.

EXPLANATORY NOTES *continued*

ABS DATA AVAILABLE

33 More detailed balance of payments and international merchandise trade data, including forward seasonal factors are available as time series spreadsheets or data cubes from the ABS website. Merchandise trade data by commodity, country and state that are not on the ABS website may be available on request. Inquiries should be made to the National Information and Referral Service as shown on the back of this publication.

RELATED PRODUCTS AND PUBLICATIONS

34 Users may also wish to refer to the following publications which can be downloaded free of charge from the ABS website by using the 'Statistics' tab and selecting the relevant catalogue number:

- *Balance of Payments and International Investment Position, Australia* (cat. no. 5302.0) – issued quarterly
- *Balance of Payments – Goods and Services, Preliminary Quarterly Estimates* (cat. no. 5302.0.55.004) – issued quarterly
- *International Merchandise Imports, Australia* (cat. no. 5439.0) – issued monthly
- *International Trade Price Indexes, Australia* (cat. no. 6457.0) – issued quarterly
- *Balance of Payments and International Investment Position, Australia: Concepts, Sources and Methods* (cat. no. 5331.0)
- *Information Paper: Quality of Australian Balance of Payments Statistics* (cat. no. 5342.0)
- *International Merchandise Trade, Australia: Concepts, Sources and Methods* (cat. no. 5489.0)
- *A Guide to Australian Balance of Payments and International Investment Position Statistics* (cat. no. 5362.0.55.001).

35 Current publications and other products released by the ABS are available from the 'Statistics' tab on the ABS website. The ABS also issues a daily *Release Advice* on the website which details products to be released in the week ahead. A *foreign trade theme page* and a *balance of payments theme page* are available on the ABS website. Select *Topics @ a Glance – Economy – Foreign Trade* or *Balance of Payments*. This page provides direct links to all foreign trade and balance of payments related data and publications, recent changes and forthcoming events, links to relevant websites and a range of other information about the Australian International Accounts.

ROUNDING

36 Where figures have been rounded, discrepancies may occur between sums of the component items and totals. Percentage movements are calculated from data at the level of precision presented in this publication (i.e. \$m) except for international merchandise trade tables.

ABBREVIATIONS

\$b	billion (thousand million) dollars
\$m	million dollars
ABS	Australian Bureau of Statistics
ADP	automatic data processing
ANZSIC	Australian and New Zealand Standard Industrial Classification
APEC	Asia Pacific Economic Co-operation
ARIMA	autoregressive integrated moving average
ASEAN	Association of South-East Asian Nations
BEC	Classification by Broad Economic Categories
BoPBEC	Balance of Payments Broad Economic Categories
BoPCE	Balance of Payments Commodities for Exports
BPM6	<i>Balance of Payments and International Investment Position Manual, Sixth Edition</i>
c.i.f.	cost, insurance and freight

EXPLANATORY NOTES *continued*

EBOPS	Extended Balance of Payments Services Classification
f.o.b.	free on board
n.e.s.	not elsewhere specified
n.i.e.	not included elsewhere
OECD	Organisation for Economic Co-operation and Development
SAR	Special Administrative Region
SITC	Standard International Trade Classification

APPENDIX RELATED ARTICLES

Article	Source(a)	Issue / Release
Investment		
Foreign currency exposure	5308.0	Mar qtr 2009
Foreign ownership of equity	5302.0	Sep qtr 2007
Kangaroo bonds	1301.0	2006
Gross external debt	5302.0	Sep qtr 2003
Balance of payments		
International comparison of balance of payments statistics	(b) 5363.0	1998–99
Merchandise trade		
Export and Import Invoice Currencies, June 2012	5368.0	Jun 2012
Characteristics of Australian Exporters, 2011–12	5368.0.55.006	May 2013
100 years of international trade statistics	5368.0	Oct 2007
New methodology for deriving counts of Australian exports	5368.0	Feb 2006
Australia's Importers, 2003–04	5368.0	Nov 2004
Australia's Exporters, 2003–04	5368.0	Oct 2004
Foreign ownership of Australian exporters and importers, 2002–03	5496.0.55.001	Jun 2004
Australia's trade with the USA	5368.0	Mar 2004
Major commodities traded by Australia, 1991 to 2000	(b) 5422.0	Dec qtr 2000
Trade in services		
ABS International Tourism Estimates	5302.0	Dec 2011
Australian outward finance and insurance foreign affiliate trade, 2009–10	5485.0	Jun 2011
International trade in services by partner country, 2006, preliminary	5368.0	Dec 2006
Changes to International trade in services statistics, August 2006	5368.0	Aug 2006
Changes to International trade in services travel statistics	5368.0	Aug 2005
Finance		
Impact of the farm season on Australian production in 2002–03 and 2003–04	1301.0	2005
Recent trends in construction and first home buyers finance	5609.0	Mar 2002
Household sector data in the financial accounts	5232.0	Mar qtr 2002
Technical information		
Technical note – Low Value Threshold	5368.0	Aug 2013
Proposed Implementation of the New International Standard for International Merchandise Trade Statistics, 2013	5368.0.55.020	Aug 2013
Amendments to Schedule 4 of Customs Tariff, March 2013	5368.0.55.019	Mar 2013
Changes to AHECC and Customs Tariff, 2012	5368.0.55.017	Dec 2011
Experimental Statistics on International Shipping Container Movements, 2009–10	5368.0.55.018	Sep 2011
Implementation of new international statistical standards in ABS National and International Accounts, September 2009	5310.0.55.002	Oct 2009
Impact of revised international standards on monthly International Trade in Goods and Services, August 2009	5368.0.55.014	Oct 2009
Estimation of Workers' Remittances based on Balance of Payments and International Investment Position Manual, Sixth Edition, September 2009	5302.0.55.003	Aug 2009
Revisions to international standards in quarterly Balance of Payments and International Investment Position statistics from September 2009, 2009	5302.0.55.002	Jul 2009
Changes to International Trade in Goods Statistics – Countries and Ports, July 2009	5368.0.55.013	Jul 2009
Revisions to international standards in monthly international trade in goods and services statistics from August 2009, 2009	5368.0.55.012	Jun 2009
Changes to International Trade in Goods Industry Statistics, July 2009	5368.0.55.011	Dec 2008
Technical note 1 – Income on debt	5302.0	Jun qtr 2008
Technical note 2 – Use of CDI data	5302.0	Jun qtr 2008
Impact of introducing Revision 4 of the Standard International Trade Classification, 2008	5368.0.55.010	May 2008
Changes to international trade statistics July 2008, 2007 to 2008	5368.0.55.009	Jan 2008
Introduction of revised international standards in ABS economic statistics in 2009, 2007	5310.0.55.001	Sep 2007
Changes on 1 January 2007 to Statistical Codes in the AHECC and the Customs Tariff, 2007	1233.0.55.001	Nov 2006
ABS implementation in January 2007 of revisions to international trade classifications, 2007	5368.0.55.005	Jun 2006
Revised treatment of Goods for Processing in Merchandise Trade and Balance of Payments Statistics	5368.0	May 2006
Impact of Customs and ABS changes on import statistics from October 2005	5439.0	Oct 2005
ABS management of the impact of the implementation of the imports component of the New Customs System	5439.0	Aug 2005
Changes to country and port classifications	5368.0	May 2003
Implementation of New Customs Systems	5368.0	Aug 2004
The effect of customs changes on export statistics	5422.0	Jun qtr 2002
Data confidentiality	5422.0	Dec qtr 1999

- (a) In the ABS website home page, select Statistics; By Catalogue Number; and click on the specified catalogue number and issue. Note: in some instances, a particular issue of the publication can be found in the Past & Future Releases page of the catalogue.
- (b) This article can be found in pdf format by referring to the Downloads page of the specified issue of this publication on the ABS website.

FOR MORE INFORMATION . . .

INTERNET **www.abs.gov.au** the ABS website is the best place for data from our publications and information about the ABS.

INFORMATION AND REFERRAL SERVICE

Our consultants can help you access the full range of information published by the ABS that is available free of charge from our website. Information tailored to your needs can also be requested as a 'user pays' service. Specialists are on hand to help you with analytical or methodological advice.

PHONE 1300 135 070

EMAIL client.services@abs.gov.au

FAX 1300 135 211

POST Client Services, ABS, GPO Box 796, Sydney NSW 2001

FREE ACCESS TO STATISTICS

All statistics on the ABS website can be downloaded free of charge.

WEB ADDRESS www.abs.gov.au